

This Resource Guide was created by the Polk County Family & Community Outreach Department to share knowledge and provide support to our community partners.

Updates will occur twice annually.

To change your agency information, please contact the Polk County Service Integration Coordinator at: Kramer.Amber@co.polk.or.us.

For additional resources, visit [211 Info](#), a statewide information and referral service. You can also dial 211 or text your zip code to 898-211 to begin searching for resources.

All entries with a "*" in this Resource Guide offer Spanish speaking staff and/or materials.

VETERANS SERVICES

SOVAH

503-508-7250
Hours: Mon-Fri 8am-5pm
Resources: Battle Buddies Support Groups, Stand Down Events, Temporary Financial Assistance
Eligibility: Veterans
Areas Served: Polk, Marion, and Yamhill Counties

Survivors Outreach Series

503-584-2389
Hours: Mon-Fri 7:30am-4:30pm
Resources: Financial Counselors, Support Coordinators
Eligibility: Veterans
Areas Served: Polk, Marion, and Yamhill Counties
www.oregonbtyr.org

Veteran Transportation Service

503-721-7804
Hours: Hours Vary
Resources: Provides transportation to VA medical center
Eligibility: All Veterans
Areas Served: Polk, Marion, and Yamhill Counties

Veterans of Foreign Wars (VFW)

503-623-4618
Hours: Check website for local post
Resources: Assist Veteran transition in to civilian life. Employment Services, Support Groups, Emergency Financial Assistance
Eligibility: Veterans and Family Members
Areas Served: Polk, Marion, and Yamhill Counties
www.myvfw.org

Vets4Warriors

1-855-838-4618
Hours: 24 hrs a day/7days a week
Resources: Provides confidential peer support
Eligibility: Veterans, Service Members, Family Members, Caregivers
Areas Served: Polk, Marion, and Yamhill Counties
www.vets4warriors.com

VA Outpatient Clinic

1750 McGilchrist St. SE #130 Salem, OR 971-304-2200
Hours: Mon-Fri 8am-4:30pm
Resources: Primary Care, Mental Health Services, Physical Therapy, Labs
Eligibility: Those who serve or have served in the military
Areas Served: Polk, Marion, and Yamhill Counties

Yamhill County Veteran Service Office*

340 NE Kirby St. McMinnville, OR 97128 503-434-7503
Hours: Mon-Fri 8am-5pm
Resources: Assists Veterans and dependents in obtaining county, state, and federal benefits
Eligibility: Veterans and Dependents
Areas Served: Yamhill County

YCAP*

1317 NE Dustin Ct. McMinnville, OR 503-472-0457
Hours: Mon-Fri 8:30am-5pm
Resources: Rent and Utility Assistance
Eligibility: Veterans with Honorable Discharge, DD214, ID, and Proof of Income
Areas Served: Yamhill County
www.yamhillcap.org

TABLE OF CONTENTS

BASIC NEEDS

- 06 BABY ITEMS
- 08 CLOTHING
- 11 EMERGENCY RENT & UTILITIES
- 13 FOOD ACCESS
- 23 FURNITURE
- 24 MEAL SITES
- 27 TRANSPORTATION

CRISIS & LEGAL SERVICES

- 30 CRISIS LINES
- 33 DOMESTIC VIOLENCE & ABUSE SERVICES
- 36 LEGAL ASSISTANCE

EDUCATION & JOB READINESS

- 38 ADULT EDUCATION
- 40 JOB READINESS
- 41 SCHOOL DISTRICTS

FAMILY ENGAGEMENT

- 46 EARLY LEARNING
- 48 FAMILY ACTIVITIES
- 51 FAMILY SUPPORT
- 55 PARENT EDUCATION

HEALTH & WELLNESS

- 58 DENTAL
- 61 MEDICAL
- 65 MENTAL HEALTH & ADDICTION SERVICES
- 69 SENIOR & DISABILITY SERVICES
- 72 VISION

HOUSING & HOMELESS SERVICES

- 76 HOMELESS SHELTERS & SERVICES
- 79 HOUSING PROGRAMS
- 81 TRANSITIONAL HOUSING

VETERAN SERVICES

- 83 VETERANS SERVICES

VETERANS SERVICES

Military OneSource*

1-800-342-9647

Hours: 24 hrs a day/7 days a week

Resources: Phone and Internet Support Offering Information and Counseling on Money Matters, Career Issues, Parenting Location, and Transition into Civilian Life

Eligibility: Active Duty, National Guard/Reservist, Retired Veterans, and Immediate Family

Areas Served: Polk, Marion, and Yamhill Counties

Operation Homefront

1-800-779-5898

Resources: Assistance with essential items, car repairs, home repairs, rent and utility assistance

Eligibility: Veterans, Active Duty Military, and/or Family Members

Areas Served: Polk, Marion, and Yamhill Counties
www.operationhomefront.net

Oregon LGBTQ Veteran Coordinator

700 Summer St. NE Salem, OR 97301
971-720-9016

Hours: Mon-Fri 8am-5pm

Resources: Correction of Military Records, Promotion and Support in Creating a Culture of Inclusion

Eligibility: Veterans

Areas Served: Polk, Marion, and Yamhill Counties

Polk County Veterans Service Office

182 SW Academy St. Dallas, OR 97338
503-623-9188

Hours: Mon-Thurs 7:30am-6pm

Resources: Assists Veterans and dependents in obtaining county, state, and federal benefits

Eligibility: Veterans and Dependents

Areas Served: Polk County

National Association for Black Veterans

100 SW Main St. Portland, OR 97204
502-412-4159

Hours: Call for appointment

Resources: Strategic Advocacy

Eligibility: Minority Veterans

Areas Served: Polk, Marion, and Yamhill Counties
www.nabvets.org

Oregon Department of Veteran Affairs*

700 Summer St. NE Salem, OR 97301
503-373-2085

Hours: Mon-Fri 8am-5pm

Resources: Helping Veterans Find Resources

Eligibility: Veterans and Family Members

Areas Served: Polk, Marion, and Yamhill Counties

Paralyzed Veterans of America

3700 Silverton Rd. NE Salem, OR 97305
503-362-7998

Hours: Mon-Fri 8am-4pm

Resources: Serving catastrophically injured veterans

Eligibility: Veterans with catastrophic injuries

Areas Served: Polk, Marion, and Yamhill Counties

Salem Vet Center

2645 Portland Rd NE Salem, OR 97301
503-362-9911

Hours: Mon-Sat 8am-6:30pm

Resources: Readjustment Counseling

Eligibility: Veterans and Family Members

Areas Served: Polk, Marion, and Yamhill Counties

VETERANS SERVICES

American Legion

503-412-4706
Hours: Check website for local post
Resources: Assist Veterans with getting connected to VA Benefits, Temporary Assistance, and Support Groups
Eligibility: Veterans and Families
Areas Served: Polk, Marion, and Yamhill Counties
www.orlegion.org

American Red Cross

675 Orchard Heights Rd. NW Suite 200 Salem, OR 503-528-5663
Hours: 24 hrs a day/7 days a week
Resources: Emergency Communications, Financial Assistance, Counseling, Other Support
Eligibility: Active Duty, National Guard/Reservist, Retired Military, and Immediate Family
Areas Served: Polk, Marion, and Yamhill Counties

Battle Buddies

630 Hood St. Salem, OR 97301
Hours: Thurs 11am-1pm
Resources: Weekly Gathering for Current and Former Military
Eligibility: Veteran
Areas Served: Polk, Marion, and Yamhill Counties
www.sovah.org

Confederated Tribes of Grand Ronde

9615 Grand Ronde Rd. Grand Ronde, OR 503-879-5211
Hours: Mon-Fri 8am-5pm
Resources: Help connecting Veterans to services
Eligibility: Tribal members who have served in the military
Areas Served: Polk and Yamhill Counties

Disabled American Veterans

100 SW Main St. F12 Rm 25 8E Portland, OR 503-412-4750
Hours: Call for Appointment
Resources: Help file a claim and support you through the process. Transportation to VA medical appointments.
Eligibility: Veterans and Families
Areas Served: Polk, Marion, and Yamhill Counties
www.dav.org

Disabled Veteran Outreach Program

370 NE Norton Ln McMinnville, OR 97128 503-434-7578
Hours: Mon-Fri 8am-5pm
Resources: Advocacy, employment, and career counseling
Eligibility: Veteran with Honorable Discharge
Areas Served: Polk, Marion, and Yamhill Counties

EasterSeals*

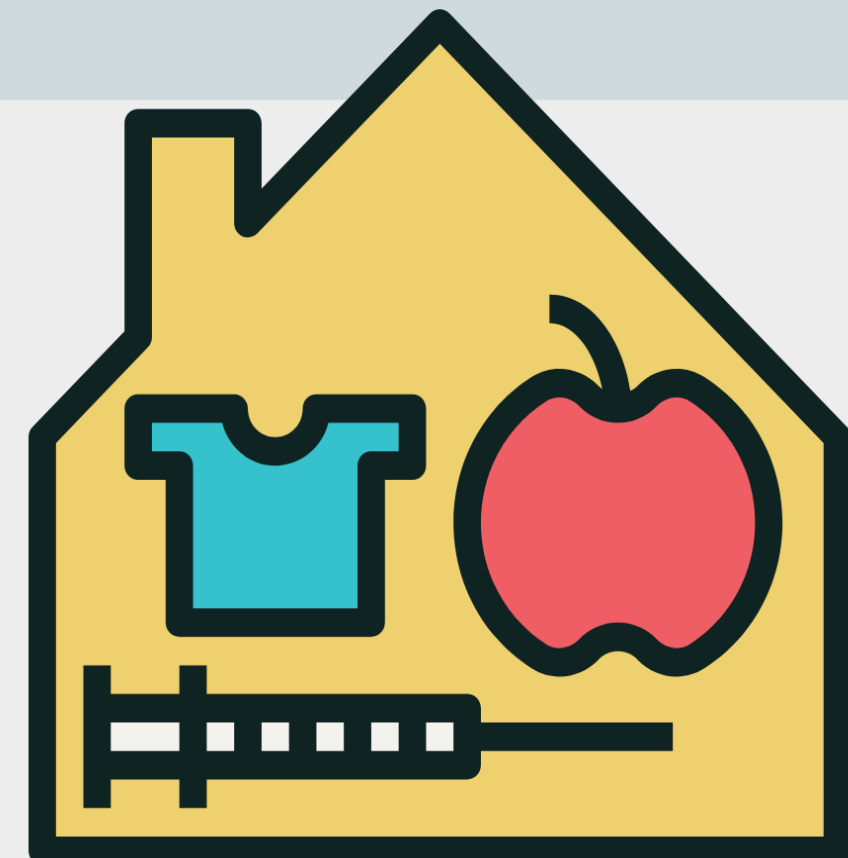
503-362-1572
Hours: Mon-Fri 8:30am-5pm
Resources: Financial Assistance, Stable Housing, Employment Resources, Case Management
Eligibility: Homeless Veterans. Income Requirements.
Areas Served: Polk and Marion Counties
www.easterseals.com

Home for Heroes

2933 Center St. Salem, OR 97301 503-362-1728
Hours: Live in Program
Resources: Transitional Housing, Case Management, and Employment Assistance
Eligibility: Male Homeless Veterans
Areas Served: Marion County

BASIC NEEDS

BABY ITEMS
 CLOTHING
 EMERGENCY RENT & UTILITY ASSISTANCE
 FOOD ACCESS
 FURNITURE AND HOUSEWARES
 MEAL SITES
 TRANSPORATION



BABY ITEMS

A Family Place Relief Nursery - McMinnville*

125 SE Cows St. McMinnville, OR 97128
503-472-4020

Hours: Mon-Thurs 8:30am-4:30pm
Resources: Diapers, Baby Clothes
Eligibility: Families with Children ages 0-5
Areas Served: Yamhill County
www.familyplacelerelief.org

A Family Place Relief Nursery - Newberg*

1714 Villa Rd. Newberg, OR 97132
503-472-4020

Hours: Thursdays 10am-Noon
Resources: Diapers, Baby Clothes
Eligibility: Families with Children ages 0-5
Areas Served: Yamhill County
www.familyplacelerelief.org

A Family Place Relief Nursery - Sheridan

435 Bridge St. Sheridan, OR 97378
503-472-4020

Hours: Wednesdays 1pm-3pm
Resources: Diapers, Clothing Closet
Eligibility: Families with Children ages 0-5
Areas Served: Yamhill County
www.familyplacelerelief.org

A Family Place Relief Nursery - Willamina

340 NW B St. Willamina, OR 97396
503-472-4020

Hours: 3rd Tuesday 10am-Noon
Resources: Diapers, Clothing Closet
Eligibility: Open to the community
Areas Served: Polk and Marion Counties
www.familyplacelerelief.org

Bambinos

322 Main St. Suite 326 Dallas, OR 97338
503-623-4618

Hours: Mon-Thurs 9am-Noon & Fri 9am-3pm
Resources: Diapers, Formula, Baby Food
Eligibility: Diaper requests limited to once per 30 days, formula requests limited to once per 60 days.
Areas Served: Polk County
www.bambinosoregon.org

Birthright of Salem

1880 Lancaster Dr. NE Suite 124 Salem, OR
503-585-2273

Hours: Mon/Tues/Thurs Fri 10am-1pm
Wednesday 10am-4pm
Resources: Baby Clothes, Diapers
Eligibility: Expectant families and new parents
Areas Served: Marion County
www.birthrightofsalem.org

City Outreach Ministry

1300 SE Brooks St. McMinnville, OR 97128
503-434-4392

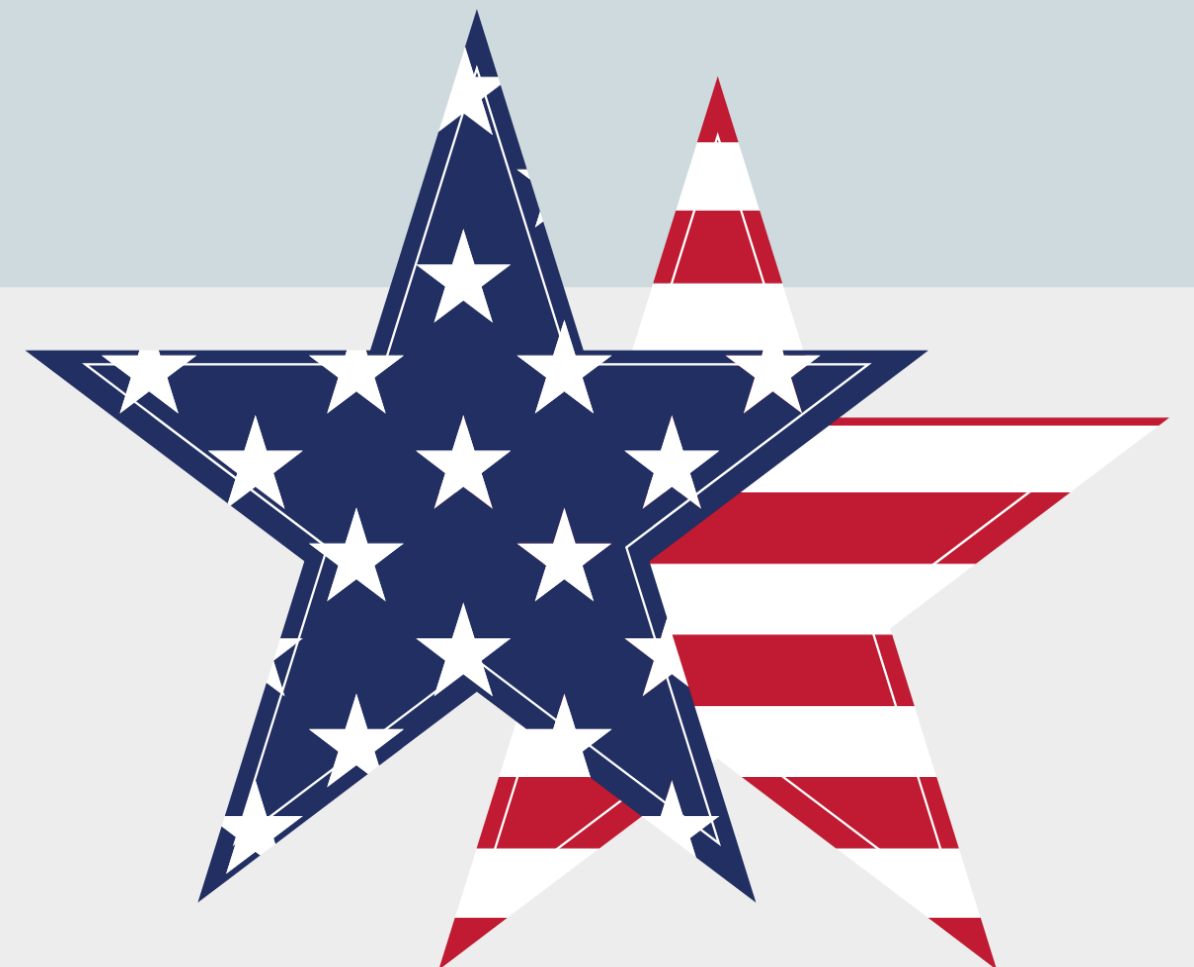
Hours: Tues/Thurs/Sat 10am-Noon
Resources: Baby Items
Eligibility: Open to the community
Areas Served: Yamhill County
mfccdoc.webs.com/city-outreach

Family Building Blocks - Dallas*

182 SW Academy St. Dallas, OR 97338
971-301-1927

Hours: Mon-Fri 8am-5pm
Resources: Clothing Closet, Food Pantry
Eligibility: Expectant families and new parents
Areas Served: Polk and Marion Counties
www.familybuildingblocks.org

VETERANS SERVICES



TRANSITIONAL HOUSING

St. Francis Shelter

1820 Berry St. SE Salem, OR 97302
503-588-0428

Hours: Mon-Thurs 10am-2pm
Resources: 1-2 Bedroom Transitional Apartments
Eligibility: Homeless families
Areas Served: Polk and Marion Counties
www.sfssalem.org

St. Joseph Shelter

925 S Main St. Mt. Angel, OR 97362
503-845-6147

Hours: Mon-Fri 8am-5pm
Resources: Shelter, Meals, Clothing, Case Management, Referrals
Eligibility: Polk County

Walkabout House

20250 Finnigan Rd. Hillsboro, OR 97132
503-554-0480

Hours: Mon-Fri 8am-5pm
Resources: Family like home for young adults with autism. Provides support and guidance to make the transition in to independent living.
Eligibility: Adults with Autism. Call for details.
Areas Served: Polk, Marion, and Yamhill Counties

Woodmansee

3737 Portland Rd. NE Salem, OR 97301
503-385-3231

Hours: Mon-Fri 8am-5pm
Resources: Transitional Housing for Any Gender
Eligibility: Must meet child protective and addictions criteria
Areas Served: Marion County



BABY ITEMS

Family Building Blocks - Doris Place*

383 N 3rd Ave. Stayton, OR 97383
503-769-1120

Hours: Mon-Fri 8am-4:30pm
Resources: Clothing Closet, Food Pantry
Eligibility: Must be enrolled in a FBB programs for mothers/families with prenatal care and children ages 0-5
Areas Served: Polk and Marion Counties
www.familybuildingblocks.org

Family Building Blocks - Gracie's Place*

1135 Edgewater St. NW Salem, OR 97304
503-363-3057

Hours: Mon-Fri 8am-4:30pm
Resources: Clothing Closet, Food Pantry
Eligibility: Must be enrolled in a FBB programs for mothers/families with prenatal care and children ages 0-5
Areas Served: Polk and Marion Counties
www.familybuildingblocks.org

Love, Inc.*

200 S College St. Newberg, OR 97132
503-537-3999

Hours: By Appointment
Resources: Baby Clothes, Diapers, Other infant care needs
Eligibility: Yamhill County residents (except McMinnville), ID is required
Areas Served: Yamhill County
www.loveincnewberg.org

Love, Inc.*

1560 Hardcastle Ave. Woodburn, OR
971-983-5683

Hours: Tues, Wed, Fri 11am-3pm
Resources: Baby Clothes, Diapers, Other infant care needs
Eligibility: Marion County residents, ID is required
Areas Served: Marion County

Michael the Archangel

1725 Capital St. NE Salem, OR 97301
503-581-2229

Hours: Mon/Tues 1pm-3pm
Resources: Maternity Clothes, Baby Clothes, Baby Food, Formula, Diapers
Eligibility: Expectant Families and New Parents
Areas Served: Marion County

Oregon Child Development Coalition*

9140 SW Pioneer Ct. Suite E Wilsonville, OR
503-570-1110

Hours: Mon-Fri 7:30am-4:30pm
Resources: Cribs, Sheets, Sleep Sacks at a reduced cost
Eligibility: Income and family sized based, infants under 12 months.
Areas Served: Polk, Marion, & Yamhill Counties
www.ocdc.net

Polk County Resource Center*

182 SW Academy St. Dallas, OR 97338
503-623-9664

Hours: Mon-Fri 8am-5pm
Resources: Diapers, Formula
Eligibility: Items available on a first come/first served basis.
Areas Served: Polk County



CLOTHING

2nd Street Community Church

504 E First St. Newberg, OR 97132
503-538-9761

Hours: Mon-Fri 9:30am-Noon
Resources: Clothing, Day Shelter, Breakfast, Lunch, Snacks, Person Hygiene Kits
Eligibility: Low-Income and Homeless
Areas Served: Yamhill County
www.2ndstreet.org

Angel's Attic

435 S Bridge St. Sheridan, OR 97378
971-261-6959

Hours: Mon-Fri 8am-5pm
Resources: Clothing
Eligibility: Students and families experiencing homelessness
Areas Served: Yamhill County

Blessing Room

337 S 3rd St. Carlton, OR 97111
503-857-6799

Hours: Mon/Fri/Sat 10am-2pm, Tues/Thurs 10am-7pm, Wed 8:30am-2:30pm
Resources: Clothing, Shoes, Household Items, Books, Toys, Food
Eligibility: Open to the community
Areas Served: Yamhill County

Community Clothing Closet

738 SW Church St. Dallas, OR 97338
503-623-3778

Hours: Mon-Sat 9am-Noon
Resources: Clothing, Backpacks, School Supplies
Eligibility: Everyone welcome
Areas Served: Polk, Marion, and Yamhill Counties

www.dallasec.org/clothing-closet

Amity Assembly of God

310 Getchell St. Amity, OR 97101
503-585-0635

Hours: Thurs-Sat 8am-5pm
Resources: Clothing Closet, Food Pantry
Eligibility: Income based, limit one visit per month, proof of address is required
Areas Served: Yamhill County

Aumsville Clothing Closet*

572 N 11th St. Aumsville, OR 97325

Hours: Wed 4pm-6pm, Thurs 10am-1pm, 1st Saturday 10am-2pm
Resources: Clothing
Eligibility: Aumsville and surrounding communities
Areas Served: Marion County

City Outreach Ministries

1300 SE Brooks St. McMinnville, OR 97128
503-472-7227

Hours: Tues/Thurs/Sat 10am-Noon
Resources: Clothing Closet, Non-Perishable Foods, Personal Care Items
Eligibility: Limit one visit per month. ID is required for first visit.
Areas Served: Yamhill County
mfccdoc.webs.com/city-outreach

Community of Christ

4570 Center St. NE Salem, OR 97301
503-378-0633

Hours: Thursday 4:30pm-6pm
Resources: Clothing Closet, Food Pantry
Eligibility: Income based, limit one visit per month
Areas Served: Polk, Marion, and Yamhill Counties

TRANSITIONAL HOUSING

Blanchet House

11750 Finn Hill Loop Carlton, OR 97111
503-852-6626

Hours: Mon-Fri 8am-4:30pm
Resources: Transitional Home and Workplace, Support Group, Working Toward Self-Sufficiency
Eligibility: Men 18 or older
Areas Served: Yamhill County
www.blanchethouse.org

Grace's House

1243 Peace St. SE Salem, OR 97302
503-600-3627

Hours: Mon-Fri 9am-4pm
Resources: Faith based transitional housing
Eligibility: Women coming out of prison
Areas Served: Marion County
www.gracehousesalem.org

Grand Ronde Women's Transitional Living

9615 Grand Ronde Rd. Grand Ronde, OR 97128
503-879-1452

Hours: Mon-Fri 8am-5pm
Resources: Sober Housing and Life Skills
Eligibility: Grand Ronde Tribal members or parents of tribal members

River of Life House

628 SE Jefferson St. Dallas, OR 97338
503-569-5443

Hours: Mon-Fri 8am-5pm
Resources: Faith Based Transitional Housing Options
Eligibility: Men recently released from incarceration. Must maintain sobriety.
Areas Served: Polk County
www.riveroflifehouse.org

Father Taaffee Homes

3737 Portland Rd. NE Salem, OR 97301
503-393-2843

Hours: Mon-Fri 8am-5pm
Resources: Shelter and Basic Needs
Eligibility: Pregnant Teens who wish to keep their babies
Areas Served: Marion County

Grand Ronde Men's Transitional Living

9615 Grand Ronde Rd. Grand Ronde, OR 97128
503-879-2046

Hours: Mon-Fri 8am-5pm
Resources: Sober Housing and Life Skills
Eligibility: Grand Ronde Tribal members or parents of tribal members

Oxford House

243 NE 8th St. McMinnville, OR 97128
503-883-9585

Hours: Mon-Fri 8am-5pm
Resources: Clean and Sober Housing
Eligibility: Women and Children only.
Areas Served: Yamhill County

Shelly's House

503-588-8492

Hours: Mon-Fri 8am-5pm
Resources: Safe Transitional Housing for Women. Peer Support Model.
Eligibility: Women supervised and referred by Marion County Corrections
Areas Served: Polk County

HOUSING PROGRAMS

Shangri-La

1661 Edgewater St. NW Salem, OR 97304
503-967-6318

Hours: Mon-Fri 8am-4pm

Resources: Designed to provide permanent housing assistance to people with disabilities who are homeless

Eligibility: Documented disability, income limits apply

Areas Served: Marion and Polk Counties
www.shangrilaoregon.org

West Valley Housing Authority*

204 SW Walnut St. Dallas, OR 97338
503-623-8387

Hours: Mon-Thurs 8am-4:30pm

Resources: Section 8 Voucher Program, Low Income Public Housing

Eligibility: Income guidelines apply.

Areas Served: Polk County
www.wvpha.org



CLOTHING

Dallas Adventist Church

589 SW Birch St. Dallas, OR 97338
503-623-5872

Hours: Wed 10am-1pm

Resources: Clothing Closet, Food Pantry

Eligibility: Residents of Dallas, Monmouth, Independence, Falls City. Limit one visit per month

Areas Served: Polk County
dallas22.adventistchurchconnect.org

First Christian Church

1300 SE Brooks St. McMinnville, OR
503-472-7227

Hours: Tues/Thurs/Sat 10am-Noon

Resources: Clothing Closet, Non-Perishable Foods, Personal Care Items

Eligibility: Call to confirm eligibility of items

Areas Served: Yamhill County
www.mfccdoc.webs.com

Helping Hands

1755 13th St. SE Salem, OR 97302
503-364-9936

Hours: Mon-Thurs, Sat 9am-Noon

Resources: Clothing and Shoes

Eligibility: Income based, ID required

Areas Served: Polk and Marion Counties
www.helpinghands-salem.org

Hope Station Community Services, Inc.

1337 Madison St. NE Suite 115 Salem, OR
503-339-7710

Hours: Tues-Thurs 10:30am-3pm

Resources: Clothing Closet, Food Pantry

Eligibility: \$30/Month + 2hrs/Month of volunteer time at Hope Station

Areas Served: Polk, Marion, & Yamhill Counties
www.hopestationcsi.org

Love, Inc.*

200 S College St. Newberg, OR 97132
503-537-3999

Hours: By Appointment

Resources: Baby Clothes, Diapers, Other infant care needs

Eligibility: Yamhill County residents (except McMinnville), ID is required

Areas Served: Yamhill County
www.loveincnewberg.org

Love, Inc.*

1560 Hardcastle Ave. Woodburn, OR
971-983-5683

Hours: Tues, Wed, Fri 11am-3pm

Resources: Baby Clothes, Diapers, Other infant care needs

Eligibility: Marion County residents, ID is required

Areas Served: Marion County

Lydia's Closet

1305 Goucher St. Amity, OR 97101
503-835-2551

Hours: Mon-Thurs 10am-1pm

Resources: Clothing

Eligibility: Open to the community

Areas Served: Yamhill County

Monmouth Christian Church*

959 Church St. W Monmouth, OR 97361
503-838-1145

Hours: Wed 10am-Noon

Resources: Clothing Closet, Food Pantry

Eligibility: Clothing requests limited to once per month

Areas Served: Polk County
www.mymcc.cc

CLOTHING

Newberg Community Thrift Store

414 E 3rd St. Newberg, OR 97132
971-538-5051

Hours: Mon-Fri 9am-1pm
Resources: Clothing
Eligibility: Those experiencing homelessness can request a voucher from 2nd Street Community Church
Areas Served: Yamhill County

Salvation Army - McMinnville*

950 SW 2nd St. McMinnville, OR 97128
503-472-1009

Hours: Tues-Thurs 1pm-4pm
Resources: Clothing Closet, Food Pantry
Eligibility: Income based, SNAP, TANF, SSI, or LIEAP program eligible.
Areas Served: Yamhill County
www.mcminnville.salvationarmy.org

Seventh-Day Adventist Church

530 Edgewood Dr. Newberg, OR 97132
503-538-2622

Hours: 1st & 3rd Thursday 10am-2pm
Resources: Clothing
Eligibility: Open to the community
Areas Served: Yamhill County

Threads North Valley Friends

4020 N College St. Newberg, OR 97312
503-538-5340

Hours: Fri/Sat 11am-1pm
Resources: Clothing
Eligibility: Open to the community
Areas Served: Yamhill County

Salvation Army - Salem*

1977 Front St. NE Salem, OR 97301
503-585-6688

Hours: Mon-Fri 9am-3pm
Resources: Clothing Closet, Food Pantry
Eligibility: ID required, eligibility dependent on needs
Areas Served: Marion and Polk Counties

Silverton Community Center

421 S Water St. Silverton, OR 97381
503-873-3446

Hours: Mon/Thurs/Fri 9am-Noon, Tues 6pm-8pm
Resources: Clothing Closet and Food Pantry
Eligibility: Income based
Areas Served: Marion County



HOUSING PROGRAMS

ARCHES*

615 Commercial St. NE Salem, OR 97301
503-399-9080

Hours: Mon-Fri 8am-5pm
Resources: Tenant Based Housing Voucher Program
Eligibility: Must be experiencing homelessness or at risk of being homeless
Areas Served: Polk and Marion Counties
www.mwvcaa.org

Confederated Tribes of Grand Ronde

9615 Grand Ronde Rd. Grand Ronde, OR
503-879-5211

Hours: Mon-Fri 8am-5pm
Resources: Home Repair, Medical Adaptation Grants, Down Payment Assistance Grants, Section 8
Eligibility: Available to qualified Tribal Members
Areas Served: Polk and Yamhill Counties
www.grandronde.org

Housing Authority of Yamhill County*

135 NE Dunn Place McMinnville, OR 97128
503-434-6571

Hours: Mon-Thurs 8am-5pm
Resources: Section 8, Farm Worker Housing, Home Ownership, Home Rehab
Eligibility: Income limits apply.
Areas Served: Yamhill County

Polk CDC*

657 SW Main St. Dallas, OR 97338

Hours: Mon-Fri 8am-5pm
Resources: Vouchers, Low Income Housing, Home Ownership Program, Home Improvement Programs
Eligibility: Income limits apply
Areas Served: Polk County

Community Home Builders

2195 NE 27th St. McMinnville, OR 97128

Hours: Call for hours
Resources: Housing program where a group of families work together to build others home in a rural community
Eligibility: Income based. Your "sweat equity" is required.
Areas Served: Yamhill County

Habitat for Humanity

1024 SE 1st St. McMinnville, OR 97128
503-472-9637

Hours: Mon-Fri 9am-4pm
Resources: Habitat Homes are built with volunteer labor and donated materials.
Eligibility: Attend an orientation to learn how to apply.
Areas Served: Yamhill County
www.machabitat.org

Marion County Housing Authority*

2645 Portland Rd. NE Salem, OR 97301
503-789-4170

Hours: Mon-Fri 8am-4:30pm
Resources: Provides Low Income Housing Properties Throughout Marion County and Surrounding Areas
Eligibility: Income Based
Areas Served: Marion County

Salem Housing Authority*

360 Church St. SE Salem, OR 97301
503-588-6368

Hours: Mon-Fri 7:30am-4:30pm
Resources: Section 8 Voucher Program, Low Income Public Housing
Eligibility: Income guidelines apply
Areas Served: Marion County

HOMELESS SHELTERS & SERVICES

Yamhill Community Action Partnership*

1317 NE Dustin Ct. McMinnville, OR 97128
503-472-0457

Hours: Mon-Fri 8:30am-5pm

Resources: Emergency Shelter, Rent & Energy Assistance, Food Bank, Weatherization, Youth Programs

Eligibility: Income Based

Areas Served: Yamhill County

www.yamhillcap.org

Yamhill County Gospel Rescue Mission*

1340 NE Logan St. McMinnville, OR 97128
503-472-9766

Hours: 24 hrs a day/7 days a week

Resources: Shelter, Clothing, Showers, and Hygiene Items

Eligibility: Homeless Individuals

Areas Served: Yamhill County

www.ycgrm.org



EMERGENCY RENT & UTILITIES

Children's Cancer Association*

1200 NW Naito Pkwy, Ste. 140 Portland, OR
503-244-3141

Hours: Mon-Thurs 8am-5pm, Fri 8am-1:30pm

Resources: Essential Needs, Assistance and Support

Eligibility: Children with serious or life-threatening illness

Areas Served: Polk, Yamhill, and Marion Counties

www.joyrx.org

Community Action Energy Assistance*

1850 45th Ave NE Salem, OR 97305
503-588-9016

Hours: Mon-Fri 8am-5pm

Resources: Energy Assistance

Eligibility: 60% of state median income

Areas Served: Marion and Polk Counties

www.mycommunityaction.org

Community Services DBA Grand Shermania

120 N Bridge St. Sheridan, OR 97378
503-843-3133

Hours: Mon 10am-2pm, Tues-Thurs 8am-4:30pm

Resources: Energy Assistance and Prescription Assistance

Eligibility: Available to families in Sheridan, Willamina, and Grand Ronde

Areas Served: Polk and Yamhill Counties

Confederated Tribes of Grand Ronde Emergency Assistance

9615 Grand Ronde Rd. Grand Ronde, OR

Hours: Mon-Fri 8am-5pm

Resources: Rental and Energy Assistance

Eligibility: Serve Native Americans. Some programs are income based and available in certain counties.

Areas Served: Polk and Yamhill Counties

Mid-Willamette Valley Community Action Agency*

615 Commercial St NE Salem, OR 97301
503-585-6232

Hours: Mon-Fri 8:30am-4pm

Resources: Rent and Utility Assistance

Eligibility: Referral from other local non-profit organization

Areas Served: Polk and Marion Counties

www.mycommunityaction.org

Northwest Human Services*

1233 Edgewater St NE Salem, OR 97304
503-581-5535

Hours: Hotline Open 24 hours a day/7 days a week

Resources: Rent & Utility Assistance

Eligibility: Shut off notice required for utilities, 72 hour eviction notice required for rent

Areas Served: Marion County

www.northwesthumanservices.org

Polk County Resource Center*

182 SW Academy St. Suite 220
Dallas, OR 97338
503-623-9664

Hours: Mon-Fri 8am-5pm

Resources: Emergency Assistance for Rent and Utilities

Eligibility: Polk County Resident

Areas Served: Polk County

Salvation Army - McMinnville*

1950 SW 2nd St McMinnville, OR 97128
503-472-1009

Hours: Mon-Fri 1pm-4:30pm

Resources: Utility and Prescription Assistance

Eligibility: Yamhill County resident. Must call for appointment.

www.salvationarmy.org

EMERGENCY RENT & UTILITIES

Salvation Army - Salem*

1977 Front St. Salem, OR 97301
503-585-6688

Hours: Mon-Fri 8am-5pm
Resources: Utilities and Rent Assistance
Eligibility: Income based, 72 hour eviction, and shut off notice required
Areas Served: Marion County
www.salvationarmy.org

Silverton Community Center

421 S Water St. Silverton, OR 97381
503-873-3446

Hours: Mon/Thurs/Fri 9am-Noon, Tues 6pm-8pm
Resources: Emergency Assistance with Utilities and Prescriptions
Eligibility: Income based, 72 hour eviction, or shut off notice required
Areas Served: Marion County

St. Joseph Shelter*

925 S Main St. Mount Angel, OR 97362
503-845-2468

Hours: Wed/Fri 1pm-4pm
Resources: Emergency Assistance with Utilities and Prescriptions
Eligibility: Proof of address required
Areas Served: Marion County
www.benedictine-srs.com/st-joseph-shelter-cmsn

St. Vincent De Paul - McMinnville*

435 Baker St. McMinnville, OR 97128
503-472-6216

Hours: Mon-Fri 10am-1pm
Resources: Rental Assistance, Emergency Prescription Assistance
Eligibility: Proof of address and ID required
Areas Served: Yamhill County
svdpsalem.org

Yamhill Community Action Partnership*

1317 NE Dustin Ct. McMinnville, OR 97128
503-687-1480

Hours: Mon-Fri 8:30am-5pm
Resources: Utilities and Rent Assistance
Eligibility: Income based
Areas Served: Yamhill County
www.yamhillcap.org



HOMELESS SHELTERS & SERVICES

HOME Youth Resources Center

625 Union St. NE Salem, OR 97301
503-391-6428

Hours: Everyday including holidays, Noon-7pm
Resources: Resource Assistance, Referrals, Peer Groups, Skill Building, Runaway Services
Eligibility: Homeless Youth
Areas Served: Polk County
www.mwvcaa.org

Northwest Human Services - HOST*

1143 Liberty St. NE Salem, OR 97301
503-588-5825

Hours: Sat/Sun 8am-10pm
Resources: Overnight Shelter, Drop-In Center, Meals, Phones, Computer, Shower, Clothing, Etc.
Eligibility: Teens Age 16-24
Areas Served: Marion County
www.northwesthumanservices.org

Restoration House

650 Locust St. NE Salem, OR 97301
503-363-2805

Hours: Mon-Fri 8am-4pm
Resources: Residential facility serving those with a legal history
Eligibility: Focus on those with a legal history
Areas Served: Marion County

Salvation Army*

1901 Front St. NE Salem, OR 97301
503-585-6688

Hours: 24 hrs a day/7 days a week
Resources: Structured lodging, individual guidance and training from the Salvation Army
Eligibility: Anyone over 18 years old experiencing homelessness. No active drug or alcohol use.
Areas Served: Polk and Marion Counties

Simonka House*

5119 River Rd. N Keizer, OR 97303
503-362-7487

Hours: Mon-Fri 8am-5pm
Resources: Emergency Shelter, Long Term Residential Services, Employment Resources, Mailbox
Eligibility: Woman and women with children under age 12
Areas Served: Marion County

St. Francis Shelter

1820 Berry St. Salem, OR 97302
503-588-0428

Hours: Mon-Fri 8am-5pm. Call for appointment.
Resources: Temporary Housing for Families with Children.
Eligibility: Families in need with children.
Areas Served: Marion County

Union Gospel Mission*

777 Commercial St. NE Salem, OR 97301
503-362-3983

Hours: Mon-Fri 8am-5pm
Resources: Men's Shelter, Meals, Mail, Employment Resources
Eligibility: Shelter for men only. Meals available to everyone.
Areas Served: Polk and Marion Counties
www.ugmsalem.org

WestCare Veterans Home & Resource Center

2933 Center St. NE Salem, OR
503-364-1728

Hours: Mon-Fri 8am-5pm
Resources: Group Home, Case Management, Showers, Laundry
Eligibility: Homeless Veterans, >40 Days clean and sober. No convictions related to violence, sex crimes, or arson.

HOMELESS SHELTERS & SERVICES

2nd Street Community Church

504 E 2st. St. Newberg, OR 97132
503-538-9761
Hours: Mon-Fri 9am-1pm
Resources: Day Shelter, Meals, Showers, Hygiene Supplies, Telephone, Laundry, Community Mailbox
Eligibility: Homeless or at risk
Areas Served: Yamhill County
www.2ndstreet.org

ARCHES Day Center

615 Commercial St. NE Salem, OR 97301
Hours: Mon-Fri 8:30am-4:30pm
Resources: Day Shelter, Meals, Showers, Hygiene Supplies, Telephone, Laundry, Community Mailbox
Eligibility: Homeless or at risk
Areas Served: Polk and Marion Counties
www.mwvcaa.org

Catholic Community Services

3737 Portland Rd NE Salem, OR 97301
503-390-2699
Hours: Call for Hours
Resources: Specializes in housing for people/families living with mental illness
Eligibility: Families in need
Areas Served: Marion County
www.ccsww.org

Center for Hope and Safety

605 Center St. NE Salem, OR 97301
503-378-1572
Hours: Mon-Fri 9am-5pm
Resources: Emergency Shelter
Eligibility: Individuals experiencing domestic violence
Areas Served: Marion County
www.hopeandsafety.org

Dream Center

503-599-3166
Hours: Mon-Fri 8am-5pm
Resources: Help with IDs, Employment, Housing, Meals
Eligibility: Homeless or at risk of being homeless
Areas Served: Marion County
www.salemdreamcenter.org

Family Promise*

1055 Edgewater NW Salem, OR 97304
503-370-9752
Hours: Mon-Fri 8am-5pm
Resources: Overnight Shelter, Morning Transportation to Day Center, 3 Meals a Day
Eligibility: Homeless with Children. No active drug or alcohol use.
Areas Served: Marion County
www.familypromisemwv.org

Helping Hands Re-Entry Outreach

503-560-9387
Hours: Mon-Fri 8:30am-4:30pm
Resources: 15 Bed Facility for Women and Children. 25 Bed Facility for Men
Eligibility: Must Complete Intake
Areas Served: Yamhill County
www.helpinghandsreentry.org

Henderson House

610 SE 1st St. McMinnville, OR 97128
503-472-0244
Hours: Mon-Fri 9am-5pm
Resources: Emergency Crisis Shelter for Women and Children
Eligibility: Shelter for women and children leaving domestic violence
Areas Served: Yamhill County
www.hendersonhouse.org

FOOD ACCESS

Aumsville Pentecostal Church of God

10153 Mill Creek Rd Aumsville, OR 97325
971-719-5665
Hours: Thurs 9am-11:30am & 3pm-5pm
Resources: Shopping Style Food Distribution
Eligibility: Open to the community
Areas Served: Marion County

Aware Food Bank

152 Arthur St. Woodburn, OR 97071
503-981-5828
Hours: Mon-Fri 9am-Noon
Resources: Food Box
Eligibility: Income based
Areas Served: Marion County
www.awarefoodbank.org

Baker Creek Community Church

325 NW Baker Creek Rd.
McMinnville, OR 97128
503-857-6493
Hours: Wed 10am-Noon
Resources: Food Box and Bread Items
Eligibility: Limit one box per month per family
Areas Served: Yamhill County

Community of Christ

4570 Center St NE. Salem, OR 97301
503-378-0633
Hours: Thurs 4:30pm-6pm
Resources: Emergency Food Boxes Twice a Month. Other Items Available.
Eligibility: Income based, proof of income is required
Areas Served: Polk, Marion, and Yamhill Counties

Cove Orchard Food Pantry

22125 Highway 47 Yamhill, OR 97148
503-804-0333
Hours: Call for Appointment
Resources: Food Box
Eligibility: Income based
Areas Served: Yamhill County

Dallas Food Bank

322 Main St. Suite 180 Dallas, OR 97338
503-623-3578
Hours: Mon/Tues/Thurs 1pm-3pm, Wed/Fri 9am-11am
Resources: Produce, Non-Perishables
Eligibility: Income based, limit one visit per month
Areas Served: Polk County
www.dallasfoodbank.com

Dallas H2O

451 SE Maple St Dallas, OR 97338
503-831-4736
Hours: Mon/Wed/Sat 10am-1pm
Resources: Food Boxes (before 1pm)
Eligibility: Dallas residents only. Income based. Limit one visit per month.
Areas Served: Polk County

Dallas Seventh Day Adventist

589 SW Birch St Dallas, OR 97338
503-623-5872
Hours: Mon-Fri 8am-5pm
Resources: Food Box
Eligibility: Polk County Resident
Areas Served: Polk County
dallas22.adeventistchurchconnect.org

FOOD ACCESS

Dayton Food Pantry

300 Flower Lane Dayton, OR 97114
503-846-2474

Hours: 2nd and 4th Tues 4pm-6pm

Resources: Non-Perishables

Eligibility: Open to all residents of Dayton

Areas Served: Yamhill County

Department of Human Services*

190 W Ellendale Dallas, OR 97338
503-623-5526

Hours: Mon-Fri 8am-5pm

Resources: Food Stamps (SNAP)

Eligibility: Income based, intake required

Areas Served: Polk and Marion Counties

www.oregon.gov/DHS

Department of Human Services (Yamhill)*

368 NE Norton Ln. McMinnville, OR 97128
503-472-0311

Hours: Mon-Fri 7am-5pm

Resources: Food Stamps (SNAP)

Eligibility: Income based, call for appointment

Areas Served: Yamhill County

www.oregon.gov/DHS

Ella Curran Food Bank*

840 N Main St. Independence, OR 97351
503-838-1276

Hours: Mon/Tues/Thurs 9am-11:45am

Resources: Produce, Non-Perishables, Food Boxes

Eligibility: Any resident of Monmouth, Independence, or surrounding areas

Areas Served: Polk County

Family Life

1675 Wallace Rd NW Salem, OR 97304
503-364-0002

Hours: Mon/Wed 9am-11:45am

Resources: Food Box

Eligibility: Boxes provided once per month per family.

Areas Served: Polk and Marion Counties

www.thisisfamilylife.org

Falls City Seventh Day Adventist

205 N Main St. Falls City, OR 97344
503-787-3814

Hours: 3rd Wed Noon-3pm

Resources: Produce, Non-Perishables, Frozen Foods

Eligibility: Income based, community residents, limit one visit per month

Areas Served: Polk County

www.fallscitychurch.com

First Baptist Church

395 Marion St. NE Salem, OR 97301
503-364-8825

Hours: Mon 9am-11am

Resources: Food Box

Eligibility: Limit one visit per month

Areas Served: Polk and Marion Counties

Gates Community Center

284 SW Cedar St. Mill City, OR 97375
503-897-4904

Hours: Tues 10am-Noon & Thurs 6pm-8pm

Resources: Food Box

Eligibility: Income based, ID required

Areas Served: Marion County

HOUSING & HOMELESS

HOMELESS SHELTERS & SERVICES
HOUSING PROGRAMS
TRANSITIONAL HOUSING



FOOD ACCESS

Good Samaritan Pantry

4570 Center St. NE Salem, OR 97301
503-378-0633

Hours: Thurs 4:30-6pm

Resources: Emergency Food Box

Eligibility: Income based

Areas Served: Polk, Marion, and Yamhill Counties

Grand Ronde Food Bank

9675 Grand Ronde Rd. Grand Ronde, OR
503-879-3663

Hours: 1st, 3rd, 5th Fri 9am-1pm, 2nd Sat 10am-2pm, 4th Wed 2pm-6pm

Resources: Produce, Non-Perishables, Frozen Foods

Eligibility: Income based, call for guidelines

Areas Served: Polk and Yamhill Counties

Grand Sherimina Food Pantry

120 NW Bridge St. Sheridan, OR 97378
503-843-3133

Hours: Tues 2pm-6pm, Thurs 11am-3pm, 3rd Sat 11am-3pm

Resources: Food Box

Eligibility: Income based, limit one visit per month

Areas Served: Yamhill County

Hope on the Hill

500 NW Hill Rd. McMinnville, OR 97128
503-435-8924

Hours: Tues 11am-1pm, Thurs 6pm-8pm

Resources: Shopping style food distribution

Eligibility: Income based, limit one visit per month

Areas Served: Yamhill County

www.hopeonthehill.org

Isaiah 58 Food Bank

310 Getchell St Amity, OR 97101
503-583-0635

Hours: Sat 9am-Noon

Resources: Food Box, Bread, Produce

Eligibility: Income based, limit one visit per month. Proof of address is required.

Areas Served: Yamhill County

Iskam Mək^hMək-Haws*

9675 Grand Ronde Rd.
Grand Ronde, OR 97347
503-879-3663

Hours: Wednesdays and Fridays 10am-2pm

Resources: Food Boxes

Eligibility: All are welcome

Areas Served: Polk and Yamhill Counties

Jason Lee United Methodist Church

3674 12th St. SE Salem, OR 97302
503-364 2844

Hours: Mon/Tues/Wed/Fri 9am-11:30am

Resources: Food Box

Eligibility: Income based

Areas Served: Marion County

Jefferson United Methodist Church

310 N 2nd St Jefferson, OR 97352
541-327-1948

Hours: Wed 3pm-6pm

Resources: Shopping Style Pantry, Fresh, Frozen, Canned, and Dry Foods

Eligibility: Open to all with limit of one visit per month

Areas Served: Marion County

www.gjccenter.org/community-resources

FOOD ACCESS

Joseph's Storehouse of Hope

200 Detroit Ave Detroit, OR 97341
503-881-9846

Hours: 2nd to last Fri of the month 11am-1pm
Resources: Food Box
Eligibility: Income based
Areas Served: Marion County

Keizer Community Food Bank

4505 River Rd N Salem, OR 97303
503-393-4507

Hours: Mon 6pm-7:30pm, Thurs 9am-10:30am
Resources: Food Box
Eligibility: Income based
Areas Served: Marion County

Kingwood Bible Church

1125 Elm St. NW Salem, OR 97304
503-399-9600

Hours: 1st/3rd Sat 10am-Noon
Resources: Food Box
Eligibility: West Salem residents, income based, limit one visit per month
Areas Served: Marion County
www.kingwoodbible.net

Lafayette Community Church

288 Jefferson St. Lafayette, OR 97127
503-864-8409

Hours: 2nd & 4th Tues 4pm-5pm
Resources: Food Box
Eligibility: Income Based
Areas Served: Yamhill County

Life Church

255 College Drive NW Salem, OR 97304
503-362-0362

Hours: 2nd Thurs 7pm-8pm & 4th Sat 10am-Noon
Resources: Food Box
Eligibility: Income based
Areas Served: Marion County

Love, Inc.*

120 S Elliott Rd. Newberg, OR 97132
503-537-3999

Hours: By appointment
Resources: Non-Perishables and Frozen Meals
Eligibility: Yamhill County residents (except McMinnville), ID and proof of address required
Areas Served: Yamhill County
www.loveincnewberg.org

Love, Inc.*

1560 Hardcastle Ave.
Woodburn, OR 97071
971-983-5683

Hours: Mon-Thurs 10am-1pm
Resources: Food Box
Eligibility: Marion County residents, ID and proof of address required
Areas Served: Marion County

Mano a Mano North Salem*

3850 Portland Rd #202 Salem, OR 97301
503-363-1895

Hours: Mon-Thurs 10am-6pm
Resources: Food Box
Eligibility: Income based
Areas Served: Marion County

www.manoamanofc.org

VISION

Central Lions Club

503-838-2416

Hours: Mon Noon-1pm

Resources: Vision Assistance

Eligibility: Depends on availability of funds

Areas Served: Polk County

Dallas Lions Club

503-931-9860

Hours: 1st Thursday of Each Month 11:30am-12:30pm

Resources: Eye Health Care

Eligibility: Adults and children. Depends on availability of funds.

Areas Served: Polk County

Oregon Lions Sight and Hearing Foundation

1010 NW 22nd Ave Suite 144 Portland, OR 971-270-0203

Hours: Mon-Fri 9am-5pm

Resources: Helps finance eye and ear surgeries for individuals who cannot afford needed treatments

Eligibility: Oregon residents for 2+ years, Income based

Areas Served: Polk, Marion, and Yamhill Counties



FOOD ACCESS

Mano a Mano South Salem*

2920 Saddle Club Rd SE Suite 1009
Salem, OR 97301
503-315-2290

Hours: Tues/Wed/Thurs 9am-5pm

Resources: Food Box

Eligibility: Income based

Areas Served: Marion County

www.manoamanofc.org

Mari Linn School

641 5th St Lyons, OR 97358
503-859-2154

Hours: 3rd Sat 11am-1pm

Resources: Food Box

Eligibility: Call for eligibility

Areas Served: Marion County

Marion Friends Church

5997 Stayton Rd SE Turner, OR 97392
503-769-7915

Hours: 1st and 3rd Monday 9am-11am

Resources: Food Box

Eligibility: Marion County residents

Areas Served: Marion County

Mission Benedict

925 S Main St. Mt. Angel, OR 97362
503-845-2468

Hours: Fri 1pm-4pm

Resources: Shopping Style Pantry

Eligibility: Marion County Residents

Areas Served: Marion County

Mission of Hope*

822 Industry Way Silverton, OR
503-873-7353

Hours: Wed 2pm-5pm, 3rd Sat 10am-Noon

Resources: Food Pantry

Eligibility: Marion County Residents

Areas Served: Marion County

Monmouth Christian Church*

959 Church St W Monmouth, OR 97361
503-838-1145

Hours: Wed 10am-2pm

Resources: Non Perishable Food Box

Eligibility: Community residents, limit one box per month

Areas Served: Polk County

Mountain Gospel Fellowship

303 N Main St Falls City, OR 97344
503-787-8037

Hours: Fri 4pm-6pm

Resources: Free Produce

Eligibility: All are welcome

Areas Served: Polk County

Mt. Angel Community Center

195 E Charles St. Mt. Angel, OR 97361
503-845-6998

Hours: Tues-Fri 9:30am-11:30am

Resources: Food Box

Eligibility: Income based, ID is required

Areas Served: Marion County

FOOD ACCESS

New Harvest Church

4290 Portland Rd. NE Salem, OR 97301
503-763-6911

Hours: 3rd Sat of the month, 9am-11am
Resources: Emergency Food Box
Eligibility: Open to the community
Areas Served: Marion County
newharvestch.org

New Hope Foursquare Church

4963 Swegle Rd NE Salem, OR 97301
503-307-8886

Hours: 3rd & 4th Sunday 2pm-5pm
Resources: Emergency Food Box
Eligibility: Open to the community
Areas Served: Marion and Polk Counties

New Life Community Church

410 14th St. SE Salem, OR 97301
503-363-5771

Hours: 4th Sat of the month 10:30am-12:30pm
Resources: Emergency Food Box
Eligibility: Income based with limit of one visit per month
Areas Served: Polk, Marion, and Yamhill Counties

Newberg Christian Church

2315 Villa Rd. Newberg, OR 97132
503-538-3104

Hours: Thurs 4:30pm-5:45pm
Resources: Bread and Fresh Produce
Eligibility: Open to all in need
Areas Served: Yamhill County
newbergcc.org

Newberg Fish Emergency Services

125 A Elliott Rd. Newberg, OR 97132
503-538-4444

Hours: Mon/Tues/Thurs 9am-1pm
Resources: Food Box
Eligibility: Income based, limit one visit per month, proof of address required
Areas Served: Yamhill County
www.newbergfish.org

Northwest Human Services*

694 Church St. NE Salem, OR 97301
503-581-5535

Hours: Call for appointment
Resources: Emergency Food Box
Eligibility: Income based
Areas Served: Polk and Marion Counties
www.northwesthumanservices.org

Pauline Memorial AME Zion

3593 Sunnyview Rd NE Salem, OR 97303
503-623-4618

Hours: Produce ONLY 2nd & 4th Fri, 12:30pm-2:30pm; Full Pantry Tues 10:30am-1:30pm, 1st/2nd/3rd Mon 9am-11am
Resources: Emergency Food Box
Eligibility: Open to the community
Areas Served: Marion County

People's Church

4500 Lancaster Dr NE Salem, OR 97315
503-304-4000

Hours: 4th Sat 10am-11am
Resources: Shopping Style Pantry
Eligibility: Income based
Areas Served: Marion County

SENIOR & DISABILITY SERVICES

Oregon Senior Health Insurance Benefits Assistance (SHIBA)*

350 Winter St. SE Salem, OR 97301
800-722-4134

Hours: Mon-Fri 8am-5pm
Resources: Offers Education, Assistance, and Advocacy for Individuals
Eligibility: Medicare beneficiaries and their family members or caregivers
Areas Served: Polk, Marion, and Yamhill Counties

Providence Community Connection

310 Villa Rd. Ste 110 Newberg, OR 97132
503-537-1549

Hours: Mon-Thurs 8:30am-4pm
Resources: Volunteers assist with light housekeeping, minor home repairs, errands, visiting, etc.
Eligibility: 60+, lower income and health or aging issue that jeopardizes ability to live independently
Areas Served: Marion and Yamhill Counties

Silverton Senior Center

115 Westfield St. Silverton, OR 97381
503-873-3093

Hours: Mon-Fri 9am-4pm
Resources: Offers a variety of activities and programs
Eligibility: Membership is required.
Areas Served: Marion County
www.silvertonseniorcenter.org

Yamhill Community Action Partnership*

1317 NE Dustin Ct. McMinnville, OR 97128
503-482-0457

Hours: Mon-Fri 8:30am-5pm
Resources: YCAP Elderly Assistance Fund, One Time Financial Assistance
Eligibility: Seniors (60+)
Areas Served: Yamhill County
www.yamhillcap.org



SENIOR & DISABILITY SERVICES

McMinnville Senior Center

2250 NE McDaniel Ln. McMinnville, OR
503-435-0407

Hours: Mon-Thurs 9am-8pm
Resources: Activities, Support, Resources, and Meal Sites for Seniors
Eligibility: Older adults in McMinnville and surrounding areas
Areas Served: Yamhill County

Monmouth Senior Center

180 Warren St. S Monmouth, OR 97361
503-838-5687

Hours: Mon-Fri 9am-4pm
Resources: Classes, Activities, and Trips
Eligibility: Monmouth Residents
Areas Served: Polk County

MV Advancements

319 NE 5th St. McMinnville, OR 97128
503-472-2248

Hours: Mon-Fri 8am-5pm
Resources: Provides Employment, Residential Support, and Transportation
Eligibility: Adults with Disabilities
Areas Served: Yamhill County
www.mvadvancements.org

Northwest Senior & Disability Services*

260 Kings Valley Hwy Dallas, OR 97338
503-831-0581

Hours: Mon-Fri 8am-5pm
Resources: Free or Low Cost Services to Seniors and People with Disabilities and their Family Caregivers
Eligibility: Polk, Marion, and Yamhill Counties
Areas Served: Polk County
www.nwsds.org

Northwest Senior & Disability Services*

300 SW Hill Rd. McMinnville, OR 97128
503-472-9441

Hours: Mon-Fri 8am-5pm
Resources: Free or Low Cost Services to Seniors and People with Disabilities and their Family Caregivers
Eligibility: Polk, Marion, and Yamhill Counties
Areas Served: Yamhill County
www.nwsds.org

Northwest Senior & Disability Services*

3410 Cherry Ave NE Salem, OR 97303
503-304-3400

Hours: Mon-Fri 8am-5pm
Resources: Free or Low Cost Services to Seniors and People with Disabilities and their Family Caregivers
Eligibility: Polk, Marion, and Yamhill Counties
Areas Served: Marion County
www.nwsds.org

Northwest Senior & Disability Services*

2100 Progress Way Woodburn, OR 97071
503-304-3420

Hours: Mon-Fri 8am-5pm
Resources: Free or Low Cost Services to Seniors and People with Disabilities and their Family Caregivers
Eligibility: Polk, Marion, and Yamhill Counties
Areas Served: Marion County

Oregon Commission For The Blind*

780 Commercial St SE Suite 200 Salem, OR
503-378-8479

Hours: Mon-Fri 8am-5pm
Resources: Offers Education, Assistance, and Equipment
Eligibility: Programs for adults who are legally blind or with diagnosed visual impairments
Areas Served: Polk, Marion, and Yamhill Counties

FOOD ACCESS

Polk County Resource Center*

182 SW Academy St. Suite 220
Dallas, OR 97338
503-623-9664

Hours: Mon-Fri 8am-5pm
Resources: Food Box, Food Pantry
Eligibility: Polk County Resident
Areas Served: Polk County

Promise Pantry

33331 SE Full Quartz Landing
Dundee, OR 97115
503-544-9070

Hours: Sun 1pm-3pm
Resources: Food Box
Eligibility: Income based with limit of one visit per month
Areas Served: Yamhill County

Sacred Heart Food Bank

680 Elm St Gervais, OR
503-792-4231

Hours: 1st & 3rd Wed 1pm-4pm
Resources: Food Box
Eligibility: Income based
Areas Served: Marion County
www.shstl.org/food-bank

Salem Evangelical Church

455 Locust St NE Salem, OR 97301
503-581-0102

Hours: 1st and Last Thurs of the Month 10am-Noon
Resources: Food Box
Eligibility: Open to anyone
Areas Served: Marion County
www.salemec.com

Salvation Army - McMinnville*

1950 SW 2nd St McMinnville, OR 97128
503-434-7292

Hours: Tues-Thurs 1pm-4pm
Resources: Emergency Food Box
Eligibility: Income based, or be SNAP, TANF, or SSI eligible. Proof of income required.
Areas Served: Yamhill County
www.mcminnville.salvationarmy.org

Salvation Army - Salem*

1977 Front St NE Salem, OR 97301
503-585-6688

Hours: Mon-Fri 9am-Noon
Resources: Shopping Style Pantry
Eligibility: Limit one visit per month
Areas Served: Polk and Marion Counties
www.salem.kroccenter.org

Scotts Mills Community Center

298 4th St Scotts Mills, OR 97375
503-873-5059

Hours: Tues 9am-11am
Resources: Food Box
Eligibility: Income based
Areas Served: Marion County

Seventh Day Adventist

1860 Summer St NE Salem, OR 97301
503-623-4618

Hours: Mon/Tues 10am-Noon, Closed in July
Resources: Emergency Food Box
Eligibility: Income based
Areas Served: Marion County

FOOD ACCESS

Share and Care

445 N Maple St Yamhill, OR 97148
503-662-4489

Hours: Hours vary. Please call for appointment.
Resources: Food Box
Eligibility: Income based
Areas Served: Yamhill County

Shared Blessing @ Family Life Church

1675 Wallace Rd NW Salem, OR 97304
503-364-0002

Hours: Mon/Wed/Fri 9am-11:45am
Resources: Food Box
Eligibility: Limit one visit per month
Areas Served: Polk and Marion Counties
www.thisisfamilylife.org

Silverton Area Community Aid*

421 S Water St Silverton, OR 97381
503-873-3446

Hours: Tues-Thurs 1pm-4pm
Resources: Emergency Food Box
Eligibility: Income based, or be SNAP, TANF, or SSI eligible. Proof of income required.
Areas Served: Yamhill County
www.mcminnville.salvationarmy.org

Solid Rock Church

3535 Ward Dr NE Salem, OR 97305
503-758-9633

Hours: 2nd Sat 9am-10am
Resources: Food Box
Eligibility: Open to the community
Areas Served: Marion County

Spanish Seventh Day Adventist*

4625 Cordon Rd NE Salem, OR 97305
503-758-9633

Hours: Wed 6:30pm-8:30pm
Resources: Emergency Food Box
Eligibility: Open to the community
Areas Served: Marion County

St Joseph Shelter*

925 S Main St Mt. Angel, OR 97362
503-845-2468

Hours: Wed/Fri 1pm-4pm
Resources: Shopping Style Pantry
Eligibility: All are welcome
Areas Served: Marion County

St. Vincent De Paul - McMinnville*

435 SE Baker St McMinnville, OR 97128
503-472-6216

Hours: Mon-Fri 10am-1pm
Resources: Food Box
Eligibility: Intake appointment required.
Areas Served: Yamhill County

St. Vincent De Paul - North Salem*

3745 Portland Rd NE Salem, OR 97301
503-364-5672

Hours: Mon/Tues/Wed/Fri 10am-1:45pm, Thurs 11am-1pm
Resources: Food Box
Eligibility: Income based
Areas Served: Marion County
www.svdpusa.org

SENIOR & DISABILITY SERVICES

Aging & Disability Resource Connection*

3140 Cherry Ave NE Keizer, OR 97303
503-304-3420

Hours: Mon-Fri 8am-5pm
Resources: Alzheimer's and Dementia Care, Support, Education, and Resources
Eligibility: Resources for Everyone
Areas Served: Polk, Marion, and Yamhill Counties
www.adrcforegon.com

Alzheimer's Association of Oregon

2315 Portland Rd. NE Salem, OR 97301
800-272-3900

Hours: Mon 8:30am-5pm, Tues/Thurs 8:30am-1pm
Resources: Alzheimer's and Dementia Care, Support, Education, and Resources
Eligibility: Open to everyone
Areas Served: Polk, Marion, and Yamhill Counties
www.alz.org/oregon

Chehalem Senior Center

101 W Foothills Dr. Newberg, OR 97132
503-537-9404

Hours: Mon-Fri 8am-4pm
Resources: Programs for Seniors, Meals on Wheels, Activities and Support Services
Eligibility: Older adults in Newberg and surrounding areas
Areas Served: Yamhill County
www.cprdnewberg.com

Community Connections

310 Villa Rd. Ste 110 Newberg, OR 97132
503-537-9404

Hours: Mon-Fri 8:30am-4:30pm
Resources: Volunteers to help address unmet health needs at the medical center and in the community
Eligibility: Older adults, children with special needs
Areas Served: Yamhill County

Dallas Senior Center

955 SE Jefferson St. Dallas, OR 97338
503-623-8554

Hours: Mon-Fri 8:30am-5pm
Resources: To improve the quality of life for all senior citizens in the greater Dallas area
Eligibility: Dallas residents
Areas Served: Polk County

Elder Abuse Senior & Disabled Services Division

500 Summer St. NE E02 Salem, OR 97301
503-945-5811

Hours: 24 hrs a day/7 days a week
Resources: Serving as advocates for older people. Abuse reporting hotline.
Eligibility: Open to everyone
Areas Served: Polk County
www.aaos.org

FACT Oregon

2475 SE Ladd Ave Ste. 430 Portland, OR
503-786-6082

Hours: Mon-Fri 9am-4pm
Resources: Support for families navigating disability service and supports. Understanding special education services.
Eligibility: Open to those experiencing a disability and their families
Areas Served: Polk, Marion, and Yamhill Counties



MENTAL HEALTH & ADDICTION SERVICES

Salem Free Clinics

555 Gaines St. NE Salem, OR 97301
503-581-2129

Hours: Mon-Fri 8am-5pm
Resources: Mental Health Services
Eligibility: Sliding Fee Scale
Areas Served: Polk, Marion, and Yamhill Counties

Valley Mental Health

670 Hawthorne Ave. SE Salem, OR 97301
503-589-4046

Hours: Mon-Fri 8am-5pm
Resources: Individual and Group Setting
Eligibility: Call for information
Areas Served: Polk, Marion, and Yamhill Counties
www.valleymental.com

Yamhill County Chemical Dependency*

627 NE Evans St. McMinnville, OR 97128
503-434-7527

Hours: Mon-Fri 7:30am-6pm
Resources: Adult Programs, Chemical Dependency Counseling
Eligibility: Accepts OHP and Private Insurance
Areas Served: Yamhill County

Yamhill County Adult Mental Health

627 NE Evans St. McMinnville, OR 97128
503-434-7527

Hours: Mon-Fri 8am-5pm
Resources: Counseling and Medication Management
Eligibility: Accepts OHP and Private Insurance
Areas Served: Yamhill County

Salem Pastoral Counseling

503-370-8050

Hours: Mon-Fri 8am-8pm
Resources: Provides Counseling for a Variety of Issues
Eligibility: Accepts most insurance plans.
Areas Served: Polk, Marion, and Yamhill Counties

West Salem Mental Health*

1245 Edgewater Sr. NW Salem, OR 97304
503-378-7526

Hours: Mon-Fri 8am-5pm
Resources: Mental Health Services, Medication Assistance
Eligibility: OHP, Sliding Scale
Areas Served: Marion County
www.northwesthumanservices.org

Yamhill County Youth & Family*

420 NE 5th St. McMinnville, OR 97128
503-434-7462

Hours: Mon-Fri 8:30am-5pm
Resources: Counseling for Children
Eligibility: Accepts OHP and Private Insurance
Areas Served: Yamhill County



FOOD ACCESS

St. Vincent De Paul - Woodburn*

417 Harrison St Woodburn, OR 97301
971-338-1074

Hours: 2nd & 4th Thurs 5pm-7pm
Resources: Food Box
Eligibility: Income based
Areas Served: Marion County

Table of Plenty Queen of Peace

4227 Lone Oak Rd SE Salem, OR 97302
503-362-4618

Hours: Thurs 4:30-7pm
Resources: Shopping Style Pantry
Eligibility: Open to the community
Areas Served: Polk and Marion Counties

Turner Christian Food Bank

7871 Marion Rd SE Turner, OR 97392
503-743-2119

Hours: Mon 9am-11:30
Resources: Food Box
Eligibility: Open to the community
Areas Served: Marion County
www.turnerchristianchurch.com/food-bank

West Gate Assembly of God

1675 Wallace Rd NW Salem, OR 97304
503-364-0002

Hours: 1st & 4th Wed
Resources: Food Box through Shared Blessings
Eligibility: Please call for availability, ID is required
Areas Served: Marion County

Stayton Community Food Bank

155 2nd Ave Stayton, OR 97383
503-758-9633

Hours: Mon-Fri 9am-Noon
Resources: Emergency Food Box
Eligibility: Open to the community
Areas Served: Marion County

Trinity United Methodist Church

590 Elma Ave SE Salem, OR 97317
503-585-8851

Hours: Mon/Wed/Fri 1pm-3:30pm
Resources: Food Box
Eligibility: Income based, limit one visit per month
Areas Served: Marion County
www.trinityumcsalem.org

Valley Life Center

1795 SE Miller Ave Dallas, OR 97338
503-623-4116

Hours: Mon-Thurs 8:30-4:30pm & Fri 8:30am-1pm
Resources: Non-Perishable Food Box
Eligibility: Open to anyone, limit one time per year
Areas Served: Polk County
www.valleylifecenter.com

Winston Salem United Methodist Church

1219 Third St NW Salem, OR 97304
503-363-9600

Hours: Mon/Wed 1pm-3pm
Resources: Shopping Style Pantry
Eligibility: Income based, limit one visit every 28 days. Geared toward people with diabetes. Must take anyone referred by a doctor.
Areas Served: Polk and Marion Counties

FOOD ACCESS

Woodburn Spanish Seventh Day Adventist*

728 Willow Ave Woodburn, OR 97071
503-984-6422

Hours: Wed 6pm-8pm
Resources: Food Box
Eligibility: Open to the community
Areas Served: Marion County

WOU Food Pantry

347 Monmouth Ave N Monmouth, OR 97361
503-838-5535

Hours: Hours vary with school year
Resources: Food Box
Eligibility: WOU students and their families
Areas Served: Polk County

Yamhill Gleaners*

4155 NE Three Mile Ln
McMinnville, OR 97128
503-472-4618

Hours: Call for appointment
Resources: Fresh Local Produce
Eligibility: Call for membership
Areas Served: Polk and Yamhill Counties



MENTAL HEALTH & ADDICTION SERVICES

McMinnville Cooperative Ministries

544 NE 2nd St. McMinnville, OR 97128
503-434-8608

Hours: Mon-Fri 8am-5pm
Resources: 12 Step Literature
Eligibility: Self Referrals
Areas Served: Polk, Marion, and Yamhill Counties

Methadone Tx and Maintenance*

2035 Davcor SE Salem, OR 97302
503-588-5358

Hours: Mon-Fri 8am-5pm
Resources: Outpatient Substance Treatment and Therapies
Eligibility: Call to determine eligibility and availability of services.
Areas Served: Polk, Marion, and Yamhill Counties

Narcotics Anonymous*

503-990-0861

Hours: 24 Hr. Helpline
Resources: Peer Support
Eligibility: Anyone
Areas Served: Polk, Marion, and Yamhill Counties

Options Counseling*

2645 Portland Rd. NE Salem, OR 97301
503-588-5351

Hours: Mon-Fri 8am-5pm
Resources: Behavioral Health, Domestic Violence Program, Parenting Classes
Eligibility: Accepts OHP and Private Insurance
Areas Served: Marion County
www.options.org

Polk County Behavioral Health*

182 SW Academy St. Dallas, OR 97338
503-623-9289

Hours: Mon-Fri 8am-5pm
Resources: Adult/Child Outpatient Therapy, WRAP Around Services, Crisis Services
Eligibility: OHP, Sliding Scale Available
Areas Served: Polk County

Project Able

1599 State St. Salem, OR 97301
503-363-3260

Hours: Mon-Fri 9am-5pm
Resources: Peer Support Services to People with Mental Health and Co-Occurring Issues
Eligibility: Services are free to individuals 18 and older
www.projectable.org

Provoking Hope

213 NE 10th McMinnville, OR 97128
503-895-0934

Hours: Mon-Fri 8am-5pm
Resources: Addiction Recovery
Eligibility: Accepts OHP and Private Pay
provokinghope.com

Salem Alliance

555 Gaines St. NE Salem, OR 97301
503-581-2129

Hours: Mon-Fri 8:30am-5pm
Resources: Grief Support, Prayer and Emotional Support, Life Path Confident Kids, Peacemakers Groups
Eligibility: Call for support group information
Areas Served: Marion County

MENTAL HEALTH & ADDICTION SERVICES

Gamblers Anonymous

3825 D St. NE Salem, OR 97301
503-363-6173

Hours: Sat 5pm
Resources: Provides Peer Support
Eligibility: Everyone is welcome
Areas Served: Polk, Marion, and Yamhill Counties

Marion County Children's Behavioral Health

3867 Wolverine St. NE Salem, OR 97305
503-588-5352

Hours: Mon-Fri 8am-5pm
Resources: Assessments, Outpatient Services, Star Court Treatment, Juvenile Justice Programs
Eligibility: Accepts OHP and Private Insurance
Areas Served: Polk, Marion, and Yamhill Counties

Marion County Alcohol & Drug Treatment

2045 Silvertown Rd. NE Salem, OR 97301
503-576-4660

Hours: Mon-Fri 8am-5pm
Resources: Adult Services, DUI Services, Outpatient Services, Counseling
Eligibility: Accepts OHP and Private Insurance
Areas Served: Polk, Marion, and Yamhill Counties

Marion County Woodburn Services

976 N Pacific Hwy Woodburn, OR 97071

Hours: Mon-Fri 8am-5pm
Resources: Adult and Adolescent Treatment Services, Assessments, Outpatient Services, DUI Services
Eligibility: Accepts OHP and Private Insurance
Areas Served: Polk, Marion, and Yamhill Counties

Lutheran Community Services NW*

435 NE Evans St. McMinnville, OR 97128
503-427-4020

Hours: Mon-Fri 8:30am-5pm
Resources: Child and Family Counseling, Violence Intervention, Health Relationships Program, Immigration Advocacy
Eligibility: Mental health services for OHP. Additional fees may apply.
Areas Served: Yamhill County
www.lcsnw.org

Marion County Adult Mental Health*

3180 Center St. NE Salem, OR 97301
503-588-5351

Hours: Mon-Fri 8am-5pm
Resources: Mood Disorders, Anxiety, Trauma Related Issues
Eligibility: Accepts OHP and Private Insurance
Areas Served: Polk, Marion, and Yamhill Counties

Marion County Her Place

503-362-1399

Hours: 24 Hours Support
Resources: Assessments, Outpatient Services, Mentor Services, Safety Service Provider, Court Advocacy
Eligibility: Accepts OHP and Private Insurance
Areas Served: Polk, Marion, and Yamhill Counties

Marion County Psychiatric Crisis Center

1118 Oak St. SE Salem, OR 97301
503-585-4949

Hours: Mon-Fri 8:30am-5pm
Resources: Provides in Person Crisis Intervention
Eligibility: Adults experiencing impairments in daily functions due to mental health crisis. OHP and Private Insurance accepted.
Areas Served: Polk, Marion, and Yamhill Counties

FURNITURE

City Outreach Ministries

1300 SE Brooks St McMinnville, OR 97128
503-472-7227

Hours: Tues/Thurs/Sat 10am-Noon
Resources: Furniture and Household Items
Eligibility: Limit one visit per month. ID required for first visit.
Areas Served: Yamhill County

First Christian Church

1300 SE Brooks St McMinnville, OR 97128
503-434-4392

Hours: Tues/Thurs/Sat 10am-Noon
Resources: Furniture, Small Appliances, Kitchen Items, Clothing, Personal Care Items, and Food Boxes
Eligibility: Income based, ID required, call to confirm available items
Areas Served: Yamhill County

Oregon Child Development Coalition*

9140 SW Pioneer Ct Suite E
Wilsonville, OR 97070
503-507-1100

Hours: Mon-Fri 9am-1pm
Resources: Clothing
Eligibility: Those experiencing homelessness can request a voucher from 2nd Street Community Church
Areas Served: Yamhill County

St. Vincent De Paul - McMinnville*

435 SE Baker St McMinnville, OR 97128
503-472-6216

Hours: Mon-Fri 10am-1pm
Resources: Emergency Furniture
Eligibility: Intake appointment required.
Areas Served: Yamhill County

Community Warehouse

8380 SW Nyberg St Tualatin, OR 97062
503-347-2147

Hours: M/T/W/F 8am-5pm
Resources: Furniture, Household Items, Linens, and Bedding
Eligibility: Availability based on inventory, family size, and need.
Areas Served: Marion and Yamhill County

Love, Inc.*

200 S College St. Newberg, OR 97132
503-537-3999

Hours: By Appointment
Resources: Furniture and Linens
Eligibility: Yamhill County residents (except McMinnville), ID is required
Areas Served: Yamhill County
www.loveincnewberg.org

Share Inc.

406-431-2583
Hours: Wed Noon-2pm
Resources: Furniture Bank
Eligibility: Referral through an agency or organization required
Areas Served: Polk and Yamhill Counties

www.shareyc.org

St. Vincent De Paul - Woodburn*

417 Harrison St Woodburn, OR 97301
971-338-1074

Hours: 2nd & 4th Thurs 5pm-7pm
Resources: Emergency Furniture
Eligibility: Income based
Areas Served: Marion County

MEAL SITES

2nd Street Community Church

504 E 1st Newberg, OR 97132
503-538-9761
Hours: Mon-Fri 9am-1pm
Resources: Breakfast, lunch, and light food to go
Eligibility: Low income and homeless population
Areas Served: Yamhill County
www.2ndstreet.org

Calvary Chapel

628 SE Jefferson St Dallas, OR 97338
503-831-1047
Hours: Tues-Thurs 10am-3pm
Resources: Emergency Meal
Eligibility: Must be an emergency. Call first to make arrangements.
Areas Served: Polk County
www.calvarydallasor.com

City Vibe

1319 3rd St. NW Salem OR 97304
503-580-3241
Hours: Fri 6pm-7:30pm
Resources: Community Dinner
Eligibility: All are welcome. Focus on those experiencing homelessness
Areas Served: Marion County
www.cityvibesalem.org

Emmaus Church

2410 Turner Rd SE Oregon Jaycee Bldg Salem, OR 97302
503-949-2124
Hours: Thurs 5:30pm-6:30pm and Sun 9am-1pm
Resources: Community Meal
Eligibility: Focus on those experiencing homelessness
Areas Served: Polk and Marion Counties

ARCHES

1165 Madison St NE Salem, OR 97301
503-399-9080
Hours: Daily Breakfast 8:30am and Daily Lunch 11:30am
Resources: Community Meal
Eligibility: Meals for Homeless
Areas Served: Marion County

Capital Park Wesleyan Church

410 19th St SE Salem, OR 97301
503-362-6626
Hours: Every other Wed 5:30pm-7pm
Resources: Community Dinner
Eligibility: All are welcome
Areas Served: Marion County
www.capitalparkchurch.com/mens-ministries

Dundee Community Center

1026 Hwy 99W Dundee, OR 97115
503-400-8032
Hours: 2nd & 4th Tues 5:30pm-6:30pm
Resources: Community Dinner
Eligibility: All are welcome
Areas Served: Polk, Marion, and Yamhill Counties

First Christian Church

402 N First St Silverton, OR 97381
503-873-6620
Hours: Wed 5pm-7pm
Resources: Community Dinner
Eligibility: All are welcome
Areas Served: Marion County

MENTAL HEALTH & ADDICTION SERVICES

Alcoholics Anonymous*

687 Cottage St. NE Salem, OR 97301
503-399-0599
Hours: Varies. Schedule at aa-salem.com
Resources: Peer Support with Maintenance of Sobriety
Eligibility: Open to all
Areas Served: Polk, Marion, and Yamhill Counties
www.aa-salem.com

Champion Team

1300 NW Adams St. B McMinnville, Or 97128
503-474-4600
Hours: Mon-Fri 8am-5pm
Resources: Providing a Safe Place and Services for Adults on a Journey to Mental Wellness
Eligibility: Free services for members
Areas Served: Yamhill County

Clear Paths

3793 River Rd. N Keizer, OR 97303
503-304-7002
Hours: Mon-Fri 8am-5pm
Resources: Addictions Programs
Eligibility: Accepts OHP and Private Insurance
Areas Served: Marion County
www.c-paths.com

First Step Treatment

120A N Everest St. Newberg, OR 97132
503-538-7647
Hours: Mon-Fri 9am-7pm
Resources: Dual Diagnosis Treatment Center, Counseling for Mental Health or Substance Abuse Issue
Eligibility: Accepts OHP, Private Insurance, Self Pay, and Sliding Scale
Areas Served: Yamhill County
www.firststeptreatmentcenter.com

Bridgeway Recovery Services*

503-363-2021
Hours: Mon-Fri 8am-6pm
Resources: Residential and Outpatient Mental Health, Addictions, DUI, and Gambling Services
Eligibility: OHP and Private Insurances Accepted.
Areas Served: Marion County
www.bridgewayrecovery.com

Chehalem Youth & Family*

504 Villa Rd. Ste 3 Newberg, OR 97132
503-538-4874
Hours: Mon-Fri 8:30am-5pm
Resources: Counseling, Youth Services, Therapeutic Groups, and Educational Support. Supervised Parenting Services.
Eligibility: Accepts OHP and some major insurances. Sliding fee available.
Areas Served: Yamhill County
www.cyfs.net

Connections Counseling Center

4035 12th St. Cutoff SE #140 Salem, OR 971-600-2714
Hours: Mon-Fri 9am-5pm
Resources: Full Range of Mental Health Services
Eligibility: Accepts most insurances, please call to verify
Areas Served: Polk, Marion, and Yamhill Counties
www.therapytreatmentsalem.com

Fostering Hope Initiative Woodmansee

503-385-3231
Hours: Residential Specialist Onsite 24 Hours Per Day
Resources: Intensive Wrap Around Services
www.ccwv.org

MEDICAL

Willamette Valley Hospice*

1015 3rd St. NW Salem, OR 97304

503-588-3600

Hours: Mon-Fri 8am-5pm

Resources: Grief Support, Hospice

Eligibility: Medicare, Medicaid, Private Insurance, Uninsured

Areas Served: Marion County

www.wvh.org

Willamina School Based Health Center*

1100 NE Oaken Hills Dr. Willamina, OR

503-876-8564

Hours: Tues-Fri 8:30am-4pm

Resources: Primary Care Services

Eligibility: Open to all members of the Willamina School District during the school year.

Ages 4-20

Areas Served: Yamhill County

www.virginiagarcia.org

Yakima Valley Farm Workers Clinic*

1175 Mt. Hood Ave. Woodburn, OR 97071

503-982-2000

Hours: Mon-Thurs 7:30am-7pm, Fri 7:30am-5pm, Sat 8am-5pm

Resources: Immunizations, Sports Physicals, Prenatal Care, Family Planning, Reproductive Health, and Education

Eligibility: OHP, Private Insurance, Sliding Scale Fees

Areas Served: Marion County

Yamhill County Public Health*

412 NE Ford St. McMinnville, OR 97128

503-434-7525

Hours: Mon-Fri 8am-5pm

Resources: Tobacco Prevention & Education, Family Planning, HIV Services, Food Handlers Services, and Child Services

Eligibility: Eligibility varies with programs

Areas Served: Yamhill County



MEAL SITES

First Presbyterian

390 NE 2nd St McMinnville, OR 97128

503-472-6256

Hours: Sat 5pm-6pm

Resources: Community Dinner

Eligibility: All are welcome

Areas Served: Marion County

James 2 Community Kitchen - Falls City

280 N Main St Falls City, OR 97344

503-931-9497

Hours: 2nd and 4th Tues 4pm-6pm

Resources: Community Dinner

Eligibility: All are welcome

Areas Served: Polk, Marion, and Yamhill Counties

McMinnville Covenant

2155 NW 2nd St McMinnville, OR 97128

503-472-9021

Hours: Sun 4pm-6pm

Resources: Dinner

Eligibility: All are welcome

Areas Served: Yamhill County

Newberg Christian

2315 Villa Rd Newberg OR, 97132

503-538-3104

Hours: Thurs 4:30pm-5:45pm

Resources: Community Dinner

Eligibility: Open to anyone needing a hot meal

Areas Served: Polk, Marion, and Yamhill Counties

www.newbergcc.org

James 2 Community Kitchen - Dallas

565 SE LaCreole Dr Dallas, OR 97338

503-931-9497

Hours: Thurs 4:30pm-6pm

Resources: Community Dinner

Eligibility: All are welcome

Areas Served: Polk, Marion, and Yamhill Counties

McMinnville Cooperative Ministries

544 NE 2nd St McMinnville, OR 97128

503-472-5622

Hours: Sat 10am-11am

Resources: Breakfast

Eligibility: All are welcome

Areas Served: Yamhill County

Mountain Gospel Fellowship

303 N Main St Falls City, OR 97344

503-856-2545

Hours: Wed 6:30

Resources: Soup Supper

Eligibility: All are welcome

Areas Served: Polk County

River Street Church of God

715 River St Newberg, OR 97132

503-538-4117

Hours: Wed 6pm-7pm

Resources: Community Dinner

Eligibility: All are welcome

Areas Served: Polk, Marion, and Yamhill Counties

MEAL SITES

Salvation Army - Salem*

1901 Front St Salem, OR 97301
503-585-6688

Hours: 7 Days a Week, 4:15pm
Resources: Dinner
Eligibility: Individuals experiencing homelessness
Areas Served: Polk and Marion Counties

South Salem Friends

1140 Baxter Rd SE Salem, OR 97312
503-364-7476

Hours: Tues 5:30pm-6pm
Resources: Community Dinner
Eligibility: All are welcome
Areas Served: Marion County
www.southsalemfriendschurch.org/friends-serving-friends

St. Edwards

5202 River Rd N Keizer, OR 97303
503-393-5323

Hours: 4th Wed of the month 5pm-7pm
Resources: Community Dinner
Eligibility: All are welcome
Areas Served: Marion County

Union Gospel Mission

777 Commercial St NE Salem OR, 97301
503-362-3983

Hours: 7 days a week, 7am, 12pm, 5pm
Resources: Soup Kitchen
Eligibility: Individuals experiencing homelessness
Areas Served: Marion County
www.ugmsalem.org

Seventh Day Adventist

530 Edgewood Dr Newberg, OR 97132
503-538-2622

Hours: 1st and 3rd Tues of the month, 5:30-6:30pm
Resources: Community Dinner
Eligibility: All are welcome
Areas Served: Yamhill County

St. Barnabas Soup Kitchen

822 W 2nd St McMinnville, OR 97128
503-472-3711

Hours: Mon-Fri 2pm-6pm
Resources: Complete meal. Often times produce, bread, and other items are available.
Eligibility: All are welcome
Areas Served: Yamhill County
www.stbarnabasmcminnville.com

St. Peter Catholic Church

2315 N Main St Newberg, OR 97132
503-538-4312

Hours: Fri 5:30pm-6pm
Resources: To-Go Community Dinner
Eligibility: All are welcome
Areas Served: Yamhill County

Yamhill County Gospel Rescue Mission*

1340 NE Logan Rd McMinnville, OR 97128
503-472-9766

Hours: Sat 11:30am-1:30pm
Resources: Breakfast and Dinner
Eligibility: All are welcome
Areas Served: Yamhill County

MEDICAL

Salem Free Clinics*

1300 Broadway NE #104 Salem, OR 97301
503-990-8772

Hours: By Appointment
Resources: Open to All
Eligibility: Uninsured, Under Insured
Areas Served: Marion County
www.salemfreeclinics.org

Salud Medical Center*

1175 Mt. Hood Ave Woodburn, OR 97071
503-982-2010

Hours: Mon-Fri 7:30am-5pm
Resources: Adult and Child Primary Care, Integrated Behavioral Health, Nutrition, Community Referrals. On-Site Pharmacy and Medical Laboratory
Eligibility: Most insurance plans accepted
Areas Served: Marion County
www.yvfwc.com

Total Health Community Clinic*

180 Atwater St. N Monmouth, OR 97361
503-606-3288

Hours: Mon-Fri 8:15am-5pm
Resources: Primary Care Services
Eligibility: Available to anyone insured, under insured, or uninsured.
Areas Served: Polk County
northwesthumanservices.org

West Salem Medical*

1233 Edgewater St. NW Salem, OR 97304
503-378-7526

Hours: Mon-Fri 7am-6:30pm, Sat 8:15am-5pm
Resources: Medical Services
Eligibility: OHP, Sliding Scale for Uninsured
Areas Served: Polk and Marion Counties
www.northwesthumanservices.org

Salem Health Urgent Care*

1002 Bellevue St. SE Salem, OR 97301
503-814-5554

Hours: 7 days a week 9:30am-8pm
Resources: Urgent Care
Eligibility: OHP, Most private insurances
Areas Served: Polk, Marion, and Yamhill Counties

Soy Sano! I'm Healthy*

1274 5th St. Ste 1-A Woodburn, OR 97071

Hours: Mon-Fri 8am-5pm
Resources: Free Preventative Care
Eligibility: Teens under 19 years old who do not qualify for OHP or QHP
Areas Served: Marion County

Virginia Garcia Clinics*

115 NE May Lane McMinnville, OR 97128
503-883-4700

Hours: Mon-Fri 7am-6pm
Resources: Birth Control Counseling, Childhood Immunizations, Community Clinics, General Care
Eligibility: Sliding Fee Scale, Medicaid, Open Card, Medicare, OHP, Private Insurance
Areas Served: Yamhill County
www.virginiagarcia.org

Willamette Family Medical Center*

435 Lancaster Dr. NE Salem, OR 97301
503-585-6388

Hours: Mon-Fri 7:30am-7pm
Resources: Preventative Care, Family Planning, Well Child and Prenatal Care, Immunizations, and Annual Exams
Eligibility: OHP, Sliding Scale for Uninsured
Areas Served: Marion County
www.wfamilymed.org

MEDICAL

Newberg FISH Emergency Services*

125-A S. Elliot St. Newberg, OR 97123
503-528-4444

Hours: Mon-Tues, Thurs 9am-1pm
Resources: Emergency Dental, Prescription, and Lodging Vouchers
Areas Served: Newberg and Dundee
www.newbergfish.org

Pacific Pediatrics*

1475 Mt. Hood Ave. Woodburn, OR 97071
503-982-0626

Hours: Mon-Fri 9:30am-6:30pm
Resources: Pediatric Primary Care, Integrated Behavioral Health, Nutrition, Community Referrals
Eligibility: Most insurance plans accepted.
Areas Served: Marion County

Polk Community Free Clinic*

320 Fir Villa Rd. Dallas, OR 97338
503-990-8772

Hours: 2nd and 4th Sat 7am-11am
Resources: Open to All
Eligibility: Uninsured/Underinsured
Areas Served: Polk County

Project Access NOW*

714 SW 20th Pl Portland, OR 97205

Hours: Mon-Fri 8:30am-5pm
Resources: Health Insurance Assistance, Health Care Navigators, Health Literacy Education
Eligibility: Eligibility varies by program.
projectaccessnow.org

Northwest Human Services*

1233 Edgewater St. NW Salem, OR 97304
503-378-7526

Hours: Mon-Fri 7am-6pm
Resources: Primary Care Services
Eligibility: Serves patients with OHP, Medicare, Private Insurance, No Insurance
Areas Served: Polk and Marion Counties
www.northwesthumanservices.org

People's Community Clinic of Newberg*

1015 N Springbrook Rd. Newberg, OR 97132
503-449-8988

Hours: Tues-Sat 9am-1pm and 2pm-5pm
Resources: Primary Care
Eligibility: Open to All
Areas Served: Marion and Yamhill Counties
peoplescommunityclinicofnewberg.org

Polk County Public Health*

182 SW Academy St. Suite 302 Dallas, OR
503-623-8175

Hours: Mon-Fri 8am-5pm
Resources: WIC, Home Visiting, Communicable Disease Screening, Family Planning, HIV Case Management
Areas Served: Polk County

Salem CBOC

1750 McGilchrist St. SE Salem, OR 97302
971-304-2200

Hours: Tues/Thurs/Fri 7:30am-4pm, Wed 4:30pm-6pm
Resources: Primary Care, Mental Health, Physical Therapy, Lab, Optometry
Eligibility: Veterans. Bring DD214, benefits letter, monthly income
Areas Served: Polk, Marion, and Yamhill Counties

TRANSPORTATION

Angel Flight West*

310-397-6936

Hours: Mon-Fri 8:30am-4:30pm
Resources: Free Air Travel for Medical Treatment, Organ Donations, Disaster Response, Terminally Ill
Eligibility: Income based, travel distance 1000 max
Areas Served: Polk, Marion, and Yamhill Counties

Love, Inc.*

200 S College St Newberg, OR 97132
503-537-3999

Hours: By Appointment
Resources: Bus Passes, Auto Repairs, Gas Vouchers for Medical Appointments
Eligibility: Call to schedule appointment
Areas Served: Yamhill County
www.loveincnewberg.org

NW Human Services*

694 Church St NE Salem, OR 97301
503-315-0712

Hours: Mon-Thurs 7am-5:30pm
Resources: Pick up from shelters, parks, drop in center to West Salem Clinic
Eligibility: Homeless, must have an appointment at West Salem Clinic
Areas Served: Marion County
www.northwesthumanservices.org

Serving our Veterans at Home

503-362-9911

Hours: Call for Appointment
Resources: Bus Passes Available
Eligibility: Veterans
Areas Served: Polk and Marion Counties
www.sovah.org

Congregations Helping People*

600 State St. Salem, OR 97301
503-391-4365

Hours: M/W/Thurs 9am-2pm, Tues 11am-2pm
Resources: Passes for local transportation in Salem-Keizer area
Eligibility: Must be school, employment, or medical related
Areas Served: Marion County
www.chpsalem.org

Mid Willamette Valley Community Action Agency*

2475 Center St NE Salem, OR 97301
503-585-6232

Hours: Mon-Fri 9am-5pm
Resources: Local Bus Passes Available for Salem-Keizer Area
Eligibility: Call to confirm
Areas Served: Marion County
www.mycommunityaction.org

Roadrunner Transport

607 Greenwood Dr. NE Keizer, OR 97303
503-989-5151

Hours: Mon-Fri 7am-7pm, after hours and weekends available
Resources: Non-emergent medical transport for those with disabilities
Eligibility: Private insurance, private pay, VA
Areas Served: Polk, Marion, and Yamhill Counties
www.roadrunnertransport.net

St. Vincent De Paul - McMinnville*

435 SE Baker St. McMinnville, OR 97128
503-473-2003

Hours: Mon-Fri 10am-1pm
Resources: Bus Passes
Eligibility: Must be employment, or medical related
Areas Served: Yamhill County

TRANSPORTATION

LogistiCare

1-844-544-1397

Hours: Mon-Fri 6am-7pm

Resources: Rides available anytime for medical appointments

Eligibility: Appointments covered by OHP

Areas Served: Polk and Marion Counties

Veteran Transportation

1-800-949-1004

Hours: Hours Vary

Resources: Provides transportation to VA Medical Centers

Eligibility: All veterans, priority goes to veterans in wheelchairs

Areas Served: Polk, Marion, and Yamhill Counties

Well Ride

807 3rd St. McMinnville, OR 97128
1-844-256-5720

Hours: Mon-Fri 7:30am-6pm

Resources: Non-Emergent Medical Transport for Members of the Yamhill CCO Plan

Eligibility: Must be a member of the Yamhill CCO. Must call at least 48 hours in advance to schedule a ride.

Areas Served: Yamhill County



MEDICAL

American Red Cross*

1860 Hawthorne Ave. NE Salem, OR 97301
503-585-5414

Hours: Mon-Fri 8am-5pm

Resources: Emergency Resources Following a Disaster

Eligibility: Available to anyone affected by a disaster

Areas Served: Polk, Marion, and Yamhill Counties

www.redcross.org

Children's Cancer Association*

1200 NW Naito Pkwy Suite 140 Portland, OR
503-244-2141

Hours: Mon-Thurs 8am-5pm

Resources: Provides Families with Essential Needs, Assistance, and Support

Eligibility: Children with serious or life threatening illness

Areas Served: Polk, Marion, and Yamhill Counties
joyrx.org

Grand Ronde Tribal Clinic

9605 Grand Ronde Rd. Grand Ronde, OR
503-879-2078

Hours: Mon-Fri 8am-5pm

Resources: Primary Care, Referrals, Patient Education, Family Planning, and Preventative Services

Eligibility: Those connected to the Grand Ronde Tribe

Areas Served: Polk and Yamhill Counties
www.grandronde.org

Marion Polk Medical Society

4985 Battle Creek Rd. SE Ste 130
Salem, OR 97302

Hours: Mon-Fri 9am-5pm

Resources: Med Assist, Project Access, Mom's Plus Program, Women's Health Program

Eligibility: Referred by practitioners, low-income, no insurance

Areas Served: Polk and Marion Counties
www.mpmedsociety.org

Central Health & Wellness Center*

1601 Monmouth St. Independence, OR
503-838-0045

Hours: Mon-Fri 8am-5pm

Resources: Full Medical, Dental, Mental, and Behavioral Health Care

Eligibility: No student is denied services because of inability to pay

Areas Served: Polk County

www.centralhealthandwellnesscenter.org

Clinical Medical Nuestra Senora de Guadalupe*

1495 Liberty St. NE Salem, OR 97301
503-364-5812

Hours: Call for appointment

Resources: Low Cost Medical Care for Spanish Speaking Families

Eligibility: Income based, Spanish speaking

Areas Served: Marion County

Lancaster Family Health Center*

3869 Beverly Ave NE Bldg J Suite 40
Salem, OR 97301

Hours: Mon-Fri 7:30am-5pm

Resources: Adult and Child Primary Care

Eligibility: Most insurance plans accepted including Medicaid and Medicare

Areas Served: Marion County

McMinnville Free Clinic*

125 E Cows St. McMinnville, OR 97128
971-261-6128

Hours: 1st and 3rd Sat 9am-1pm

Resources: Free Medical Clinic, Injury Care, Lab Services, Acute Illness Treatment, Medication Refills, Chiropractic, Counseling

Areas Served: Newberg and Dundee

www.mcminnvillefreeclinic.org

DENTAL

Virginia Garcia Clinic*

115 NE May Ln McMinnville, OR 97128
503-883-4700

Hours: Mon-Thurs 7am-6pm

Resources: Dental Care, School Based Dental Van

Eligibility: Children ages 0-21

Areas Served: Polk and Yamhill Counties

www.virginiagarcia.org

Virginia Garcia Clinic Newberg*

2251 E Hancock St. Newberg, OR 97132
971-281-3050

Hours: Mon-Thurs 7am-6pm

Resources: Comprehensive Dental Care

Eligibility: Low income guidelines

Areas Served: Yamhill County

www.virginiagarcia.org

Willamina School Based Health Center*

1100 NE Oaken Hills Dr. Willamina, OR
503-879-8564

Hours: Tues/Wed/Fri 8am-5pm

Resources: Comprehensive Dental Care

Eligibility: Open to all members of the Willamina School District

Areas Served: Polk and Yamhill Counties

www.virginiagarcia.org

West Salem Dental*

1257 2nd St. NW Salem, OR 97304
503-387-7526

Hours: Mon-Fri 7am-5:30pm

Resources: Full Service Dental

Eligibility: OHP, Medicare and Private Insurance. Sliding scale options.

Areas Served: Marion County

www.northwesthumanservices.org



CRISIS & LEGAL SERVICES

**CRISIS LINES
DOMESTIC VIOLENCE & ABUSE SERVICES
LEGAL ASSISTANCE**



CRISIS LINES

All Options*

1-888-493-0092

Hours: Mon-Fri 7am-10am

Resources: Confidential Talk About Pregnancy, Parenting, Abortion, and Adoption

Eligibility: Open to everyone

Areas Served: Polk, Marion, and Yamhill Counties

www.all-options.org

Center for Hope and Safety*

605 Center St NE Salem, OR 97301

503-399-7722 or 866-399-7722

Hours: 24 hours a day/7 days a week

Resources: Crisis and Referral Line

Eligibility: Survivors of domestic violence, sexual abuse, human trafficking, and/or stalking

Areas Served: Marion County

www.hopeandsafety.org

Crisis Text Line*

741741

Hours: 24 hours a day/7 days a week

Resources: Text HELLO to 741741

National Crisis Line for people who prefer texting over talking on the phone

Eligibility: Open to anyone

Areas Served: Polk, Yamhill, and Marion Counties

www.crisistextline.org

David Romprey Oregon Warmline

800-698-2392

Hours: Mon-Sun 9am-11pm

Resources: Provides Coming-Out, Relationship, Bullying, Workplace Issues, HIV/AIDS, Safe Sex Support, and Information

Eligibility: All LGBTQ Individuals

Areas Served: Polk, Marion, and Yamhill Counties

www.glbtnearme.org

Marion County Mental Health

1118 Oak St SE Salem, OR 97301

503-585-4949

Hours: 24 hours a day/7 days a week

Resources: Provides Over the Phone Crisis Intervention Services

Eligibility: Open to everyone

Areas Served: Polk, Marion, and Yamhill Counties

National Domestic Violence Hotline*

800-799-8255(SAFE)

Hours: 24 hours a day/7 days a week

Resources: Domestic Violence

Eligibility: Open to everyone

Areas Served: Polk, Marion, and Yamhill Counties

www.ndvg.org

National Suicide Prevention Lifeline*

800-273-8255

Hours: 24 hours a day/7 days a week

Resources: Crisis Hotline

Eligibility: Open to everyone

Areas Served: Polk, Marion, and Yamhill Counties

suicidepreventionlifeline.org

Northwest Human Services*

503-581-5535

Hours: 24 hours a day/7 days a week

Resources: Crisis Hotline, Food Boxes, and Other Resources Available

Eligibility: Open to Everyone

Areas Served: Polk, Marion, and Yamhill Counties

www.northwesthumanservices.org

DENTAL

Lancaster Family Health*

1395 Summer St. NE Salem, OR 97301

503-581-7383

Hours: Mon-Fri 7:30am-5pm

Resources: Adult and Child Dental Care

Eligibility: ODS

Areas Served: Marion County

Love, Inc.*

200 College St. Newberg, OR 97132

503-537-3999

Hours: Tues/Wed/Thurs 9am-2pm

Resources: Dental Van

Eligibility: Resources provided to Love Inc client. Please call to sign up.

Areas Served: Yamhill County

www.loveincnewberg.org

McMinnville Free Clinic

125 Cows St. McMinnville, OR 97128

971-261-6128

Hours: 1st and 3rd Sat 9am-1pm

Resources: Dental Care

Eligibility: Requires pre-screening through medical clinic prior to appointment.

Areas Served: Yamhill County

www.mcminnvillefreeclinic.org

Oregon Tech Dental Hygiene Clinic

4000 Lancaster Dr. NE Rm 101 Bldg 8 Salem, OR 503-584-7101

Hours: Mon-Wed 8am-5pm, Thurs 10am-2pm

Resources: Dental Teaching Clinic. Provides Preventative Cleanings, Exams, Sealants, & Fluoride Treatments

Eligibility: Sliding scale fees. No insurance accepted.

Areas Served: Polk and Marion Counties

Salem Free Clinics

1300 Broadway NE #104 Salem, OR

503-990-8722

Hours: By appointment only

Resources: Extractions

Eligibility: No insurance needed. 2nd weekend of the month.

Areas Served: Polk and Marion Counties

www.salemfreeclinics.org

Salud Medical Center*

1175 Mt. Hood Ave Woodburn, OR 97071

503-982-2010

Hours: Mon-Fri 7:30am-5pm

Resources: Adult and Child Dental Care

Eligibility: ODS

Areas Served: Marion County

www.yvfwc.com

Smile Keepers*

510 NE 8th St. McMinnville, OR 97128

503-980-4247

Hours: Mon-Fri 7:30am-6pm

Resources: Dental Care

Eligibility: Accepts most insurance plans.

Areas Served: Polk and Yamhill Counties

www.smilekeepersalemlancaster.com

Smile Keepers*

1880 Lancaster Dr. NE #104 Salem, OR

971-239-1864

Hours: Mon-Thurs 8am-5pm, Fri-Sat 8am-4pm

Resources: Dental Care

Eligibility: Various financing plans

Areas Served: Polk and Marion Counties

www.smilekeepersalemlancaster.com

DENTAL

Advantage Dental Clinic*

521 N First St. Stayton, OR 97383
503-416-2431
Hours: Mon-Fri 8am-5pm
Resources: Full Service Dental
Eligibility: Accepts most insurances, sliding scale may apply
Areas Served: Marion County
www.advantagedental.org

Advantage Dental Clinic Salem

1920 Turner Rd. SE Ste B Salem, OR
971-213-3231
Hours: Mon-Fri 8am-5pm
Resources: Full Service Dental
Eligibility: Accepts most insurances, sliding scale may apply
Areas Served: Polk and Marion County
www.advantagedental.org

Boys and Girls Club

1395 Summer St. NE Salem, OR 97301
503-581-7383
Hours: Call for hours
Resources: Dental Treatment
Eligibility: Low income, uninsured students, grades 1-12
Areas Served: Marion County

Bright Now Dental

831 Lancaster Dr. NE Suite 2 Salem, OR
503-362-8359
Hours: Mon-Fri 8am-5pm, Sat 8am-1pm
Resources: Full Service Dental
Eligibility: Offers some payment options for working people without insurance. Most insurance accepted.
Areas Served: Polk and Marion Counties
www.brightnow.com

Central Health and Wellness Center*

1601 Monmouth St. Independence, OR
503-838-0045
Hours: Mon-Fri 8am-4:30pm
Resources: Medical, Dental, Behavioral Health Treatment
Eligibility: No Central School District student is denied services because of inability to pay
Areas Served: Polk County
www.centralhealthandwellnesscenter.org

Dental Lifeline

503-594-0837
Hours: Call or Text for Hours
Resources: Volunteer dentists provide dental care at little or no cost
Eligibility: Disabled, elderly, medically fragile, and lack of adequate income to pay for care
Areas Served: Marion County
www.dentallifeline.org/oregon

Gentle Dental

244 E Ellendale Suite 4 Dallas, OR
503-831-9623
Hours: Mon-Fri 8am-5pm
Resources: Dental Treatment
Eligibility: Accepts OHP, Both Children and Adults
Areas Served: Polk County
www.gentledallas.com

Grand Ronde Tribal Clinic

9605 Grand Ronde Rd. Grand Ronde, OR
503-879-2002
Hours: Mon-Fri 8am-5pm
Resources: Dental Treatment
Eligibility: Those who are connected to the Grand Ronde Tribe
Areas Served: Polk and Yamhill Counties
www.grandronde.org

CRISIS LINES

Oregon Military Assistance Helpline*

800-511-6944
Hours: 24 hours a day/7days a week
Resources: Connecting Veterans in Crisis & Families with Counselors
Eligibility: Current service members, veterans, and their family members
Areas Served: Polk, Yamhill, and Marion Counties
www.ormah.com

Oregon Partnership for Life

5100 SW Macadam Ave Ste 400 Portland, OR
877-968-8491
Hours: 24 hours a day/7days a week
Resources: Confidential Crisis, Counseling & Referral Line for Youth & Families
Eligibility: Youth and Families
Areas Served: Polk, Marion, and Yamhill Counties
www.linesforlife.org

Polk County Crisis Line*

182 SW Academy St. Dallas, OR 97338
503-623-9289
Hours: Mon-Fri 8am-5pm
Resources: Support For Anyone Needing to Speak to a Crisis Counselor
Eligibility: Open to everyone
Areas Served: Polk County

Psychiatric Crisis Center*

503-585-4949
Hours: 24 hours a day/7 days a week
Resources: Crisis Hotline
Eligibility: Open to everyone
Areas Served: Polk, Marion, and Yamhill Counties

Teen 2 Teen

877-968-8491
Hours: 24 hours a day/7 days a week
Resources: Crisis Hotline
Eligibility: Open to everyone
Areas Served: Polk, Marion, and Yamhill Counties
suicidepreventionlifeline.org

The Samaritans

503-581-5535
Hours: 24 hours a day/7 days a week
Resources: Free and Confidential Emotional and Crisis Support
Eligibility: Open to Everyone
Areas Served: Polk, Marion, and Yamhill Counties

Veterans Crisis Line*

800-273-8255
Hours: 24 hours a day/7days a week
Resources: Crisis Hotline
Eligibility: Active Duty, Veterans, and Their Families
Areas Served: Polk, Yamhill, and Marion Counties

Vets4Warriors

855-838-8255 or text 732-333-3634
Hours: 24 hours a day/7days a week
Resources: Provides Confidential Peer Support
Eligibility: Veterans, Service Members, Family Members, and Caregivers
Areas Served: Polk, Marion, and Yamhill Counties
www.vets4warriors.com

CRISIS LINES

Yamhill County Behavioral Health*

627 NE Evan St. McMinnville, OR 97128
503-434-7523 or 844-842-8200

Hours: 24 hours a day/7 days a week

Resources: Crisis and Referral Line

Eligibility: Individuals experiencing crisis

Areas Served: Yamhill County



HEALTH & WELLNESS

DENTAL
MEDICAL
MENTAL HEALTH & ADDICTION SERVICES
SENIOR & DISABILITY SERVICES
VISION



DOMESTIC VIOLENCE SHELTERS & SERVICES

Abby's House (WOU)

Werner University Center
Monmouth, OR 97361
503-838-8219
Hours: Hours vary with school year
Resources: Domestic Violence, Gender Issues, STDs, Eating Disorders
Eligibility: All genders, primarily WOU students
Areas Served: Polk County
www.wou.edu/abbyshouse

NorthWest Senior & Disability Services

800-846-9165
Hours: 24 hours a day/7 days a week
Resources: Hotline to Report Elderly Abuse
Eligibility: All domestic violence survivors
Areas Served: Polk, Marion, and Yamhill Counties

CASA of Marion County

659 Cottage St. NE Salem, OR 97301
503-967-6420
Hours: Mon-Fri 8:30am-5pm
Resources: Volunteers assigned to advocate for juvenile dependency cases as a legal party to their case.
Eligibility: For abused or neglected children
Areas Served: Marion County
caseamarionor.org

CASA of Polk County

580 Main St. Ste D Dallas, OR 97338
503-623-8473
Hours: Mon-Fri 9am-5pm
Resources: Volunteers assigned to advocate for juvenile dependency cases as a legal party to their case.
Eligibility: For abused or neglected children
Areas Served: Polk County
casaofpolk.org

CASA of Yamhill County

117 NE 5th St. Ste 1 McMinnville, OR 97128
503-434-6668
Hours: Mon-Fri 8am-5pm
Resources: Volunteers assigned to advocate for juvenile dependency cases as a legal party to their case.
Eligibility: For abused or neglected children
Areas Served: Yamhill County
yccasa.org

Center for Hope and Safety*

503-378-1572
Hours: Mon-Fri 9am-5pm
Resources: Extensive Women's Crisis, Domestic Violence, and Shelter Services
Eligibility: All domestic violence survivors
Areas Served: Marion County
www.hopeandsafety.org

Child Abuse Hotline*

855-503-7233
Hours: 24 hours a day/7 days a week
Resources: Call to report concerns of child abuse or neglect
Eligibility: Open to anyone who would like to report concerns of child abuse or neglect
Areas Served: Polk, Marion, and Yamhill Counties

Department of Human Services*

190 W Ellendale Ave Dallas, OR 97338
503-623-5526
Hours: Mon-Fri 8am-5pm
Resources: Domestic Violence Grant
Eligibility: Screening Required
Areas Served: Polk County

DOMESTIC VIOLENCE SHELTERS & SERVICES

Department of Human Services*

368 NE Norton Ln. McMinnville, OR 97128
503-472-0311

Hours: Mon-Fri 8am-5pm
Resources: Child Protective Services, Family Support, Domestic Violence Assistance
Eligibility: Screening Required
Areas Served: Yamhill County

Grand Ronde Domestic & Sexual Violence Prevention Program

503-879-1660
Hours: Mon-Fri 8am-5pm
Resources: Direct Service Advocacy, Referrals, Safety Planning, Support Groups, 24 Hour Crisis Lines
Eligibility: Grand Ronde Tribal Members, Community, and Staff
Areas Served: Polk and Yamhill Counties

Henderson House*

503-472-1503
Hours: Mon-Fri 9am-5pm
Resources: Safety Planning, Protection Order Assistance, Court Accompany, Support Groups, Victim's Advocacy
Eligibility: Walk-Ins Welcome
Areas Served: Yamhill County
hendersonhouse.org

Juliette's House*

1075 SE Cedarwood Ave McMinnville, OR 503-435-1550
Hours: Mon-Fri 8am-5pm
Resources: Child Abuse Exam and Screening
Eligibility: Polk and Yamhill Residents
Areas Served: Polk and Yamhill Counties
www.julietteshouse.org

Liberty House*

2685 4th St NE Salem, OR 97301
503-540-0288
Hours: Mon-Fri 8am-5pm
Resources: Child Abuse Exam and Screening
Eligibility: Children of sexual assault
Areas Served: Polk and Marion Counties
www.libertyhousecenter.org

Marion County Victim's Assistance

555 Court St NE Ste 3231 Salem, OR 503-588-5253
Hours: Mon-Fri 8:30am-5pm
Resources: Crisis Intervention, Emotional Support for Crime Victims, Information and Referrals
Eligibility: Available to victims of crime and/or stalking
Areas Served: Polk and Marion Counties

Polk County Crime Victim's Assistance

850 Main St. Dallas, OR 97338
503-623-9268
Hours: Mon-Fri 8am-5pm
Resources: Answer Basic Court Questions, Filing Out Forms for Restitution, Advocates
Eligibility: Victims of crime and their families
Areas Served: Polk County

Sable House

503-623-6703
Hours: Mon-Thurs 9am-5pm, Fri 9am-3pm, 24 Hour Crisis Line
Resources: Extensive Women's Crisis, Domestic Violence, and Shelter Services
Eligibility: All domestic violence survivors
Areas Served: Polk and Marion Counties
www.sablehouse.org

PARENT EDUCATION

Family Building Blocks - Dallas*

182 SW Academy St. Dallas, OR 97338
503-623-9664
Hours: Mon-Fri 8am-5pm
Resources: Parenting Classes/Assistance
Eligibility: Prenatal and families parenting children 0-5 years
Areas Served: Polk County
www.familybuildingblocks.org

Family Building Blocks - Helen's Place*

180 18th St. Salem, OR 97301
503-798-4744
Hours: Varies by services, call for info
Resources: Parenting Classes/Assistance
Eligibility: Prenatal and families parenting children 0-5 years
Areas Served: Polk and Marion Counties
www.familybuildingblocks.org

Head Start of Yamhill County*

1006 NE 3rd St. Suite A McMinnville, OR 503-472-2000
Hours: Mon-Fri 8am-5pm
Resources: Parenting Classes
Eligibility: Open to all
Areas Served: Yamhill County
www.yamhillheadstart.org

Lutheran Community Services*

435 NE Evans St. McMinnville, OR 97128
503-472-4020
Hours: Mon-Fri 8:30am-5pm
Resources: Strengthening parent-child relationships for healthy child growth and development.
Eligibility: Expectant families must enroll during pregnancy or before baby is 90 days old
Areas Served: Yamhill County

Marion/Polk Early Learning Hub*

2995 Ryan Dr. SE Ste. 100 Salem, OR 503-485-3219
Hours: Mon-Fri 8am-5pm
Resources: Evidence Based Parent Education Series
Areas Served: Polk and Marion Counties

Mid-Valley Parenting*

182 SW Academy St. Dallas, OR 97338
503-623-9664
Hours: Mon-Fri 8am-5pm
Resources: Parent Education
Eligibility: Open to All
Areas Served: Polk County
www.midvalleyparenting.org

Mid-Valley Parenting*

807 NE 3rd St. McMinnville, OR 97128
503-376-7421
Hours: Mon-Fri 8am-5pm
Resources: Parenting Classes/Assistance
Eligibility: Prenatal and families parenting children 0-5 years
Areas Served: Yamhill County
www.midvalleyparenting.org

Salem CHEC*

939 Oak St. SE Salem, OR 97302
503-814-2432
Hours: Mon-Fri 9am-6pm
Resources: Community Based Parenting Support Groups and In-Home Parent Support
Eligibility: Open to all

FAMILY SUPPORT

WVP MOMS

2995 Ryan Dr. SE Salem, OR 97301
503-371-7701

Hours: Mon-Fri 8am-5pm

Resources: Comprehensive Program, Focuses on Those with Substance Abuse

Eligibility: Pregnant women at risk of substance abuse

Areas Served: Marion County

Yamhill County Public Health*

412 NE Ford St. McMinnville, OR 97128
503-434-7525

Hours: Mon-Fri 8am-5pm

Resources: Provides Education, Development Tips, Breastfeeding Support, Nutrition, and Community Referrals

Eligibility: Families with children ages 0-5 with high risk health issues

Areas Served: Yamhill County

Yamhill Valley Community Doulas

345 NE Kingwood St. McMinnville, OR 97128
503-434-7525

Hours: 24 hours a day, 7 days a week

Resources: Birth and Postpartum Doula Care, Childbirth Education, and Peer Support Groups

Eligibility: Families Enrolled in OHP

Areas Served: Yamhill County



DOMESTIC VIOLENCE SHELTERS & SERVICES

Yamhill County Crime Victims Assistance

535 E 5th St Rm 117 McMinnville, OR
503-434-7510

Hours: Mon-Fri 8am-5pm

Resources: Assistance for Victims of Crime or Stalking. Assist with Restraining Orders and Victim Compensation Programs

Eligibility: Available to victims of crime and/or stalking

Areas Served: Polk and Yamhill Counties



LEGAL ASSISTANCE

Community Mediation Services

320 Fir Villa Rd. Dallas, OR 97338
503-623-3111

Hours: Mon-Fri 8:30am-5pm

Resources: Victim Offender Mediation, Community Family Mediation

Eligibility: Call for appointment

Areas Served: Polk County

www.vorpcms.org

Legal Aid Services of Oregon*

1-800-662-6096

Hours: By Appointment Only

Resources: Provides Legal Counseling and/or Representation for Low Income Families or Individuals

Eligibility: Income Based

Areas Served: Polk, Marion, and Yamhill Counties

Lutheran Community Services NW

435 NE Evans St. McMinnville, OR 97128
503-472-4020

Hours: Mon-Fri 8am-5pm

Resources: Low-cost professional consultation, advice, and legal representation before USCIS. Free Citizenship classes.

Eligibility: Open to Yamhill County Residents

Areas Served: Yamhill County

Neighbor to Neighbor Mediation

945 Columbia St. NE Salem, OR 97301
503-588-0651

Hours: Hours Vary

Resources: Providing peaceful solutions to conflict through mediation, facilitation, education, and training

Eligibility: Please call for consult.

Areas Served: Marion County
www.n2nmediation.org

Oregon Law Center*

230 W Hayes St Woodburn, OR 97071
503-981-0336

Hours: Mon-Thurs, 8am-6pm, Fri 8am-5pm

Resources: Provides help for migrant and seasonal farmworkers with civil, employment, and work related housing issues

Eligibility: Agricultural Workers

Areas Served: Polk, Marion, and Yamhill Counties

www.oregonlawcenter.org

Polk County Family Law Facilitation

850 Main St. Dallas, OR 97338
503-623-3154 ext. 1273

Hours: Wed 9:15am

Resources: Free Review of Completed Family Law Forms

Eligibility: Must be checked in by 9am to be seen that day. Paperwork must be filled out ahead of time.

Areas Served: Polk County

Sable House

503-623-6703

Hours: Mon-Thurs 9am-5pm, Fri 9am-3pm, 24 Hour Crisis Line

Resources: Anything Associated with Domestic Violence

Eligibility: Women engaged with Sable House services

Areas Served: Polk County

www.sablehouse.org

Your Community Mediators of Yamhill County*

237 NE Ford St. Ste. 6 McMinnville, OR
503-435-2835

Hours: Mon-Fri 9am-5pm

Resources: Free/Low Cost Resolution Services

Eligibility: At least one participant must be living in Yamhill County

Areas Served: Yamhill County

www.ycmediators.org

FAMILY SUPPORT

Oregon Child Development Coalition*

4611 Lancaster Dr. NE Salem, OR 97305
503-485-0899

Hours: Hours Vary

Resources: Parenting Classes, Family Support

Eligibility: Children 3-5 years of age, have parents who are seasonal or migrant workers, income based

Areas Served: Marion County

Oregon Family Support Network*

420 NE 5th St. McMinnville, OR 97128
503-602-0461

Hours: Call for appointment

Resources: Peer support for family members within the wraparound process

Eligibility: Families with child/youth with physical, mental, emotional challenges

Areas Served: Yamhill County

www.ofsn.org

Oregon Family Support Network

1300 Broadway St. NE Suite 403 Salem, OR
503-363-8068

Hours: Mon-Fri 9am-5pm

Resources: Peer support for family members within the wraparound process

Eligibility: Families with child/youth with physical, mental, emotional challenges

Areas Served: Polk and Marion Counties

www.ofsn.org

Pacific Pediatrics WIC*

965 Liberty St. SE Salem, OR 97302
503-588-2004

Hours: Call for appointment

Resources: Healthy foods, nutrition education, breastfeeding support, and help navigating local resources

Eligibility: Pregnant, postpartum, infants, children up to age 5.

Areas Served: Marion County

Polk County Public Health*

182 SW Academy St. Dallas, Or 97338
503-623-8175

Hours: Mon-Fri 8am-5pm

Resources: WIC, Home Visiting for Children and Pregnant Women, and Family Planning

Eligibility: Varies depending on program

Areas Served: Polk County

Poyama Counseling

965 Liberty St SE Salem, OR 97302
503-588-2004

Hours: Call for appointment

Resources: Services Address: Depression, Anxiety, Grief, Loss, Trauma, and Other Family Concerns

Eligibility: Sliding scale available. Accepts most insurances.

Areas Served: Polk and Marion Counties

Safe Families for Children

3737 Portland Rd. NE Salem, OR 97302
503-580-4672

Hours: Mon-Fri 8am-5pm

Resources: Support for parent in crisis and safe place for children

Areas Served: Polk, Marion, and Yamhill Counties

Salud WIC

1175 Mt Hood Ave Woodburn, OR 97071
503-982-2006

Hours: Mon-Fri 8am-5pm, Tues/Thurs 8am-6:30pm

Resources: Healthy foods, nutrition education, breastfeeding support, and help navigating local resources

Eligibility: Pregnant, postpartum, infants, children up to age 5.

Areas Served: Marion County

FAMILY SUPPORT

Fostering Hope

3737 Portland Rd. NE Salem, OR 97307
503-580-4672

Hours: Mon-Fri 8am-5pm

Resources: Support for Parents in Crisis and Safe Places for Children

Eligibility: Residents of Polk, Marion, and Yamhill Counties

Areas Served: Polk, Marion, and Yamhill Counties

www.safe-families.org

Lancaster WIC

255 Lancaster Dr. NE Salem, OR 97301
503-576-8360

Hours: Mon-Thurs 8am-7pm, Fri 8am-5pm

Resources: Health foods, nutrition education, breastfeeding support, and help navigating local resources

Eligibility: Pregnant, postpartum, infants, children up to age 5. Income requirements.

Areas Served: Marion County

Lutheran Community Services*

435 NE Evans St. McMinnville, OR 97128
503-472-4020

Hours: Mon-Fri 8:30am-5pm

Resources: Strengthening parent-child relationships for healthy child growth and development.

Eligibility: Expectant families must enroll during pregnancy or before baby is 90 days old

Areas Served: Yamhill County

Mano a Mano Family Center*

3850 Portland Rd NE Suite 214 Salem, OR 503-363-1895

Hours: Mon-Thurs 10am-6pm

Resources: Assistance with GED Completion, Citizenship, Parenting Skills, Classes, Career Changes, and Home Buying

Eligibility: All are welcome

Areas Served: Polk, Marion, and Yamhill Counties
www.manoamano.org

Marion County Public Health*

3180 Center St. NE Salem, OR 97301
503-588-5342

Hours: Mon-Fri 8:30am-5pm

Resources: WIC Provides Case Management, Education, and Support

Eligibility: Pregnant women with identifiable risk factors, income based.

Areas Served: Marion County

McMinnville WIC

412 NE Ford St. McMinnville, OR 97128
503-434-6740

Hours: Mon 8am-6:30pm, Tues-Fri 8am-5pm

Resources: Health foods, nutrition education, breastfeeding support, and help navigating local resources

Eligibility: Pregnant, postpartum, infants, children up to age 5.

Areas Served: Yamhill County
www.saludwic.org

Newberg WIC

2251 E Hancock St. #107 Newberg, OR
503-538-8779

Hours: Mon, Tues, Wed, Fri 8am-5pm,
Thurs 8am-6pm

Resources: Health foods, nutrition education, breastfeeding support, and help navigating local resources

Eligibility: Pregnant, postpartum, infants, children up to age 5. Income requirements.

Areas Served: Yamhill County

Options Counseling*

2645 Portland Rd. NE Suite 120 Salem, OR
503-390-5637

Hours: Mon-Fri 8am-5:30pm

Resources: Provides skill training, home management, support for families receiving TANF, and community resources

Eligibility: Families referred by DHS case manager or Options Counselor

Areas Served: Polk and Marion Counties

EDUCATION & JOB READINESS

ADULT EDUCATION
JOB READINESS
SCHOOL DISTRICTS



ADULT EDUCATION

Catholic Community Services

3737 Portland Rd. NE Salem, OR 97301
503-390-2600
Hours: Mon-Fri 8am-5pm
Resources: Education for Teens Transitioning from Foster Care to Adulthood
Eligibility: Any teen transitioning from foster care into adulthood
Areas Served: Marion County
www.ccsww.org

Chemeketa Community College - Salem Campus*

4000 Lancaster Dr. NE Salem, OR 97305
503-399-5000
Resources: Degree Programs, GED Classes and Testing, Classes Offered in English and Spanish
Eligibility: Call for eligibility
Areas Served: Polk, Marion, and Yamhill Counties
www.chemeketa.edu

DHS Vocational Rehab*

368 Norton Ln. McMinnville, OR 97128
503-472-2116
Hours: Mon-Fri 8am-5pm
Resources: Vocational Counseling, Guidance, Skill Evaluation, Physical Restoration, Job Development, and Job Search
Eligibility: Available to people with disabilities
Areas Served: Yamhill County

Oregon Migrant Education Program*

2611 Pringle Rd. SE Salem, OR 97302
Hours: Mon-Fri 8am-5pm
Resources: Address Unique Needs and Access Services for Migrant Families
Eligibility: Children of migrant families. Must have moved in the last three years.
Areas Served: Polk, Marion, and Yamhill Counties
www.wesd.org/omesc

Chemeketa Community College - Polk Center*

1340 SE Holman Ave. Dallas, OR 97338
503-623-5567
Hours: Mon-Fri 8am-5pm
Resources: GED Classes and Testing, Classes Offered in English and Spanish
Eligibility: Call for eligibility
Areas Served: Polk, Marion, and Yamhill Counties
www.chemeketa.edu

Chemeketa Community College - Yamhill*

288 NE Norton Ln. McMinnville, OR 97128
503-472-9482
Hours: Mon-Thurs 8am-8pm, Fri 8am-1pm
Resources: GED Classes and Testing, Classes Offered in English and Spanish
Eligibility: Call for eligibility
Areas Served: Polk, Marion, and Yamhill Counties
www.chemeketa.edu

Mid-Valley Literacy Center*

1850 45th St. NE Salem, OR 97305
503-463-1488
Hours: Mon-Thus 10am-8pm
Resources: Language and Literacy Classes
Eligibility: Class fees, text and workbook expenses
Areas Served: Polk, Marion, and Yamhill Counties
www.midvalleyliteracycenter.org

Portland Community College

135 Werth Blvd. Newberg, OR 97132
971-722-8602
Resources: Pre-College Classes to Prepare for College Level Courses. Career Tech Programs/Courses
Eligibility: Visit Newberg Center for assistance with registration and placement assessments
Areas Served: Marion and Yamhill Counties

FAMILY SUPPORT

A Family Place - McMinnville*

125 Cows St. McMinnville, OR 97128
503-472-4020
Hours: Mon-Fri 8:30am-5pm
Resources: Support for at risk families, home visiting, parent education, and specialized preschool ages 0-5
Eligibility: Contact our staff
Areas Served: Yamhill County
familyplacere relief.org

Bambinos

322 Main St. Suite 326 Dallas, OR
503-623-4618
Hours: Mon-Thurs 9am-Noon, Fri 9am-3pm
Resources: Community Classes and Support
Eligibility: Open to all
Areas Served: Polk County
www.bambinos.org

Beverly WIC

3896 Beverly Ave NE Building J Ste 40 Salem, OR
503-391-7872
Hours: Wednesdays 8am-5pm
Resources: Health foods, nutrition education, breastfeeding support, and help navigating local resources
Eligibility: Pregnant, postpartum, infants, children up to age 5. Income requirements.
Areas Served: Marion County

Family Building Blocks - Dallas

182 SW Academy St. Dallas, OR 97338
503-623-9664
Hours: Mon-Fri 8am-5pm
Resources: Parenting Classes/Assistance
Eligibility: Prenatal and families parenting children 0-5 years
Areas Served: Polk County
www.familybuildingblocks.org

A Family Place - Newberg*

1714 Villa Rd. Newberg, OR 97132
503-472-4020
Hours: Mon-Fri 8:30am-4:30pm
Resources: Support for at risk families, home visiting, parent education, and specialized preschool ages 0-5
Eligibility: Contact our staff
Areas Served: Yamhill County
familyplacere relief.org

Bear Hugs

615 E 15th Ave. McMinnville, OR 97128
503-565-4220
Hours: Mon-Fri 8am-5pm
Resources: Pregnancy and Child Care Information for McMinnville High School students
Eligibility: Teen Parents in McMinnville School District
Areas Served: Yamhill County

Family Building Blocks - Chelsea's Place*

2425 Lancaster Dr NE Salem, OR 97305
503-566-2132
Hours: Varies by services. Call for info.
Resources: Parenting Classes/Assistance
Eligibility: Prenatal and families parenting children 0-5 years.
Areas Served: Polk and Marion Counties
www.familybuildingblocks.org

Family Building Blocks - Helen's Place*

180 18th St. Salem, OR 97301
503-798-4744
Hours: Varies by services, call for info
Resources: Parenting Classes/Assistance
Eligibility: Prenatal and families parenting children 0-5 years
Areas Served: Polk and Marion Counties
www.familybuildingblocks.org

FAMILY ACTIVITIES

Scotty's Playhouse

700 NW Hill Rd. McMinnville, OR 97128
503-472-8476

Hours: Mon/Wed/Fri 2:45pm-4:45pm,
Tues/Thurs 9am-11am

Resources: Indoor Playground

Eligibility: Free to all children under 12 years of age

Sheridan Public Library

142 NW Yamhill St. Sheridan, OR 97378
503-843-3420

Hours: Mon-Thurs 10am-5pm, Fri 10am-4pm

Resources: Reading Materials

Eligibility: Open to the public

West Salem Boys & Girls Club

925 Gerth Ave. NW Salem, OR 97304
503-428-0285

Hours: Mon-Fri 7:30am-5pm

Resources: Varied Activities

Eligibility: Membership, Scholarships Available

Areas Served: Marion County

bgc-salem.org

Willamina Public Library

382 C St. Willamina, OR 97396
503-876-6182

Hours: Mon-Thurs Noon-5pm

Resources: Reading Materials

Eligibility: Open to the public



ADULT EDUCATION

Shangri-La*

4080 Reed Rd. SE #150 Salem, OR 97301
503-581-1732

Resources: Training on Basic Family Management and Life Skills

Eligibility: Must be participating in the SNAP or TANF Program

Areas Served: Polk, Marion, and Yamhill Counties

www.shangrilacorp.org

UGM Learning Center

777 Commercial St. NE Salem, OR 97301
503-362-3983

Hours: Mon-Fri 6am-5:30pm

Resources: GED Prep, Academic Skill Tutoring

Areas Served: Marion County

www.ugmsalem.org

Unidos Bridging Community*

309 Third St. Ste 1 McMinnville, OR 97128

Hours: Mon-Fri 8am-5pm

Resources: Free Citizenship Classes to Prepare for the US Naturalization Exam

Eligibility: Free

Areas Served: Polk, Marion, and Yamhill Counties

www.unidosyamhillcounty.org

WorkSource Oregon - Polk

580 Main St. SE Ste B Dallas, OR 97338
503-378-4846

Hours: Mon-Fri 8:30am-5pm

Resources: GED Readiness Program

Eligibility: Free after registering with WSOR

Areas Served: Polk County

www.worksourceoregon.org

WorkSource Oregon - Salem

605 Cottage St. NE Salem, OR 97301
503-378-4946

Hours: Mon-Fri 8:30am-5pm

Resources: GED Readiness Program

Eligibility: Free after registering with WSOR

Areas Served: Marion County

www.worksourceoregon.org

WorkSource Oregon - Woodburn

120 E Lincoln St. Ste 115 Woodburn, OR
503-378-4946

Hours: Mon-Fri 8:30am-5pm

Resources: GED Readiness Program

Eligibility: Free after registering with WSOR

Areas Served: Marion County

www.worksourceoregon.org

WorkSource Oregon - Yamhill

370 NE Norton Ln. McMinnville, OR 97128
503-378-4846

Hours: Mon-Fri 8:30am-5pm

Resources: GED Readiness Program

Eligibility: Free after registering with WSOR

Areas Served: Yamhill County

www.worksourceoregon.org



JOB READINESS

DHS Vocational Rehab*

1707 Liberty St. SE Salem, OR 97302
503-378-2483

Hours: Mon-Fri 8am-5pm

Resources: Vocational Counseling, Goal Setting, Skill Evaluation, Job Training

Eligibility: Verified physical or mental disability that prevents finding a job

Areas Served: Marion County

Job Corps

1-800-733-5627

Resources: Career Technical Training, Education, Counseling, and Assistance Overcoming Employment Barriers

Eligibility: 16-24 years old, income based, legal resident of the US

Areas Served: Polk, Marion, and Yamhill Counties

www.jobcorps.gov

MV Advancements

960 SE Uglow Ave. Dallas, OR 97338
503-751-3039

Hours: Mon-Fri 8am-5pm

Resources: Provides Employment, Community Inclusion, Residential Support and Transportation

Eligibility: Adults with developmental disabilities and other disabilities

Areas Served: Polk County
madvancements.org

UGM Employment & Career Services

777 Commercial St. NE Salem, OR 97301
503-362-3982

Hours: Mon-Fri 6am-5:30pm

Resources: Job Readiness Prep, Assistance with Job Search, Resume, Interviews

Eligibility: Must be enrolled in New Life Fellowship Program

Areas Served: Polk, Marion, and Yamhill Counties

Easter Seals

605 Cottage St. NE Salem, OR 97301
503-378-8583

Hours: Mon-Fri 8am-5pm

Resources: Services for Adults with Disabilities and Special Needs

Eligibility: Adults and children with disabilities or special needs

Areas Served: Polk, Marion, and Yamhill Counties

www.easterseals.com

McMinnville Job and Career Center

370 NE Norton Ln. McMinnville, OR 97128
503-472-5118

Hours: Mon-Fri 8am-5pm

Resources: Job Search, Current Job Listings, Resume Tools, Individual Job Search and Counseling

Eligibility: Adults seeking employment

Areas Served: Yamhill County

Shangri La

1661 Edgewater St. NW Salem, OR 97304
503-967-6318

Hours: Mon-Fri 8am-4pm

Resources: Job Readiness, Assistance with Job Search, Resumes, Etc.

Eligibility: Must be on TANF and referred by DHS caseworker

Areas Served: Marion County

YOOP!*

117 NE 5th St. McMinnville, OR 97128
503-883-9768

Hours: Mon-Thurs 9am-6pm, Fri 2pm-6pm

Resources: Academic and Job Readiness Support

Eligibility: Ages 16-24

Areas Served: Yamhill County

www.yoop.cyfs.net

FAMILY ACTIVITIES

McMinnville Aquatic Center

138 NW Park Dr. McMinnville, OR 97128
503-434-7309

Hours: Mon-Thurs 5:30pm-8pm

Resources: Swimming

Eligibility: Open to all

Mid-Valley Parenting*

807 NE 3rd St. McMinnville, OR 97128
503-455-8047

Hours: Mon-Fri 8am-5pm

Resources: Parenting Classes, Discussion Groups, Family Activities

Eligibility: Open to all

Areas Served: Polk and Yamhill Counties

www.midvalleyparenting.org

Monmouth/Independence YMCA*

870 N Main St. Independence, OR 97351
503-838-4042

Hours: Mon-Fri 8am-Noon/4pm-8pm, Fri 10am-2pm

Resources: Fitness, Aquatics, Sports, Dance, Child Care, After-School Programs

Eligibility: Membership, Scholarships Available

Areas Served: Polk County
theyonline.org

Salem Dream Center

1075 8th St. NW Salem, OR 97304
971-599-3166

Hours: Sat 10am-Noon

Resources: Service Learning, Sharing Talents

Eligibility: Open to all

Areas Served: Polk and Marion Counties

www.salemdreamcenter.org

McMinnville Public Library*

230 NE 2nd St. McMinnville, OR 97128
503-435-5562

Hours: Tues-Sat 11am-6pm

Resources: Reading Materials

Eligibility: Open to all

Monmouth Public Library*

168 Ecols St. S Monmouth, OR 97361
503-838-1932

Hours: Tues-Fri 10am-4pm, Sat 10am-1pm

Resources: Reading Materials

Eligibility: Open to all

Areas Served: Polk, Marion, and Yamhill Counties

Newberg Public Library

503 E Hancock St. Newberg, OR 97132
503-538-7323

Hours: Tues-Thurs 10am-8pm, Fri Noon-5pm, Sat 10-5pm

Resources: Reading Materials

Eligibility: Open to the public

Salem Public Library

1400 Broadway St. NE Salem, OR 97301
503-588-6315

Hours: Mon-Fri 10am-6pm, Sat 1pm-5pm

Resources: Reading Materials

Eligibility: Open to all

Areas Served: Marion County

FAMILY ACTIVITIES

Amity Public Library

307 Trade St. Amity, OR 97101
503-835-8181

Hours: Tues-Thurs 1pm-5pm, Sat 10am-1pm
Resources: Reading Materials
Eligibility: Open to the public

Chehalem Aquatic Center

1802 Haworth Ave. Newberg, OR 97132
503-538-7454

Hours: Mon-Fri 5:15am-8pm, Sat 9am-4pm, Sun Noon-4pm
Resources: Swimming
Eligibility: Open to the public

Creating Opportunities

462 17th St. NE Salem, OR 97301
503-559-0424

Hours: Call for appointment
Resources: Provide support for families of children with disabilities or suspected disabilities
Eligibility: Open to all
Areas Served: Polk, Marion, and Yamhill Counties
www.creatingops.org

Dallas Aquatic Center

1005 SE LaCreole Dr. Dallas, OR 97338
503-623-9715

Hours: Call for hours
Resources: Classes for Seniors and Youth
Eligibility: Open to all
Areas Served: Polk, Marion, and Yamhill Counties

Dallas Public Library

950 Main St. Dallas, OR 97338
503-623-2633

Hours: Mon-Fri 10am-5pm, Sat 10am-2pm
Resources: Reading Materials, DVDs, Audio Books
Eligibility: Open to all
Areas Served: Polk, Marion, and Yamhill Counties

Independence Public Library*

175 Monmouth St. Independence, OR 97351
503-838-1811

Hours: Mon/Thurs 10am-7pm, Tues/Wed/Fri/Sat 10am-5pm
Resources: Reading Resources
Eligibility: Open to all
Areas Served: Polk County

Kids, Inc.

976 SW Hayter St. Dallas, OR 97338
503-623-6419

Hours: Tues/Wed/Thurs 9am-2pm
Resources: Youth Sports
Eligibility: Open to the public
Areas Served: Polk, Marion, and Yamhill Counties

Kroc Center*

1865 Bill Frey Dr. NE Salem, OR 97301
503-566-5762

Hours: Mon-Fri 5:30am-9pm, Sat 7am-9pm
Resources: Recreation
Eligibility: Membership or day passes, scholarships available
Areas Served: Marion County
www.salem.kroccenter.org

SCHOOL DISTRICTS

Amity School District

807 Trade St. Amity, OR 97101
503-835-2171

Hours: Mon-Fri 8am-5pm
Areas Served: Polk and Yamhill Counties

www.amity.k12.or.us

Cascade School District

10226 Marion Rd. SE Turner, OR 97392
503-749-8010

Hours: Mon-Fri 7:30am-4pm
Areas Served: Marion County

www.cascade.k12.or.us

Central School District*

750 S 5th St. Independence, OR 97352
503-838-0030

Hours: Mon-Fri 8am-5pm
Areas Served: Polk and Marion Counties

www.central.k12.or.us

Dallas School District*

111 SW Ash St. Dallas, OR 97338
503-623-5597

Hours: Mon-Fri 7:30am-4:30pm
Areas Served: Polk County

www.dallas.k12.or.us

Dayton School District*

780 Ferry St. Dayton, OR 97114
503-864-2215

Hours: Mon-Fri 7:30am-4pm
Areas Served: Yamhill County

www.dayton.k12.or.us

Falls City School District

111 N Main St. Falls City, OR 97344
503-787-3521

Hours: Mon-Fri 8am-5pm
Areas Served: Polk County

www.fallscityschools.org

Gervais School District

290 First St. Gervais, OR 97026
503-792-3803

Hours: Mon-Fri 8am-5pm
Areas Served: Marion County

www.gervais.k12.or.us

Jefferson School District

1328 N 2nd St. Jefferson, OR 97352
541-327-3337

Hours: Mon-Fri 8am-4pm
Areas Served: Marion County

www.jefferson14j.com

SCHOOL DISTRICTS

McMinnville School District*

800 NE Lafayette Ave. McMinnville, OR
503-565-4000

Hours: Mon-Fri 7:30am-4:30pm
Areas Served: Yamhill County

www.msd.k12.or.us

Mt. Angel School District

730 E Marquam St. Mt. Angel, OR 97362
503-845-2345

Hours: Mon-Fri 8am-5pm
Areas Served: Marion County

www.masd91.org

Newberg School District*

714 6th St. Newberg, OR 97132
503-554-5000

Hours: Mon-Fri 8am-5pm
Areas Served: Yamhill County

www.newberg.k12.or.us

North Marion School District*

20256 Grim Rd. NE Aurora, OR 97002
503-678-7100

Hours: Mon-Fri 7am-4pm
Areas Served: Marion County

www.nmarion.k12.or.us

North Santiam School District

1155 N 3rd Ave. Stayton, OR 97383
503-769-6924

Hours: Mon-Fri 7:30am-4pm
Areas Served: Marion County

www.n santiam.k12.or.us

Perrydale School District

7445 Perrydale Rd. Amity, OR 97101
503-623-3184

Hours: Mon-Thurs 7am-4:30pm
Areas Served: Polk and Yamhill Counties

www.perrydale.k12.or.us

Salem-Keizer School District*

2450 Lancaster Dr. NE Salem, OR 97305
503-399-3000

Hours: Mon-Fri 8am-5pm
Areas Served: Marion County

www.salkeiz.k12.or.us

Santiam Canyon School District

PO Box 197 Mill City, OR 97360
503-879-2321

Hours: Mon-Fri 8am-4:30pm
Areas Served: Marion County

www.santiam.k12.or.us

EARLY LEARNING

Salem-Keizer Head Start*

1850 45th Ave NE Salem, OR 97305
503-399-5510

Hours: Mon-Fri 7:30am-4:30pm
Resources: Head Start
Eligibility: Available to Marion County Residents
Areas Served: Marion County

Willamette ESD*

2045 SW Hwy 18 McMinnville, OR 97128
502-435-5900

Hours: Mon-Fri 8am-4:30pm
Resources: Early Intervention, Early Childhood Special Education
Eligibility: Diagnosed developmental learning disability required
Areas Served: Yamhill County

Yamhill Enrichment Society

628 NE 5th St. McMinnville, OR 97128
503-883-9654

Hours: Mon-Fri 8am-5pm
Resources: Free Early Literacy Program, Imagination Library
Eligibility: Available to children under 5
Areas Served: Yamhill County
www.yamhillenrichmentsociety.org



EARLY LEARNING

Child Care Resource & Referral*

2085 Commercial St. NE Salem, OR 97301
503-585-2491

Hours: Mon-Fri 8am-5pm
Resources: Provides Training and Connections with Child Care Providers
Eligibility: Open to everyone
Areas Served: Polk, Marion, and Yamhill Counties

Grand Ronde Head Start Preschool

9615 Grand Ronde Rd. Grand Ronde, OR
503-879-5211

Resources: Early Childhood Education and Family Support
Eligibility: Low income Grand Ronde residents in Willamina and Polk County
Areas Served: Polk and Yamhill Counties

Marion & Polk Early Learning Hub*

2995 Ryan Dr. SE Ste 100 Salem, OR
503-485-3219

Hours: Mon-Fri 8am-5pm
Resources: Information on Early Learning Initiatives
Areas Served: Polk and Marion Counties

www.parentinghub.org

Oregon Child Development Coalition*

707 McClaine St. Silverton, OR 97381
503-874-9095

Hours: Mon-Fri 8am-4:30pm
Resources: Early Head Start, Head Start, Migrant Family Programs
Eligibility: Income limits, agricultural income requirements
Areas Served: Marion County

Community Action Head Start*

2475 Center St. NE Salem, OR 97301
503-581-1152

Hours: Mon-Fri 8am-5pm
Resources: Early Head Start, Head Start
Eligibility: Marion County Resident
Areas Served: Marion County

Head Start of Yamhill County*

1006 NE 3rd St. Ste A McMinnville, OR
502-472-2000

Hours: Mon-Fri 8am-4:30pm
Resources: Home Visiting, Parenting Classes, Family Support, Leadership & Employment, Head Start & Early Head Start
Eligibility: Pregnant women, children ages 0-5, income based
Areas Served: Yamhill County
www.yamhillheadstart.org

Oregon Child Development Coalition*

535 G St. Independence, OR 97351
503-838-2745

Hours: Mon-Fri 8am-4:30pm
Resources: Early Head Start, Head Start, Migrant Family Programs
Eligibility: Income limits, agricultural income requirements
Areas Served: Polk, Marion, and Yamhill Counties
www.ocdc.net

Oregon Child Development Coalition*

1016 Newberg Hwy Woodburn, OR
503-981-3001

Hours: Mon-Fri 8am-4:30pm
Resources: Early Head Start, Head Start, Migrant Family Programs
Eligibility: Income limits, agricultural income requirements
Areas Served: Marion County
www.ocdc.net

SCHOOL DISTRICTS

Sheridan School District

435 South Bridge St. Sheridan, OR 97360
971-261-6959

Hours: Mon-Fri 8am-5pm
Areas Served: Polk and Yamhill Counties

www.sheridan.k12.or.us

St. Paul School District

20449 Main St. St Paul, OR 97305
503-633-2541

Hours: Mon-Fri 8am-5pm
Areas Served: Marion County

www.stpaul.k12.or.us

Woodburn School District*

1390 Meridian Dr. Woodburn, OR 97071
503-981-7641

Hours: Mon-Fri 8am-5pm
Areas Served: Marion County

www.woodburnsd.org

Silver Falls School District

612 Schlador St. Silverton, OR 97381
503-873-5303

Hours: Mon-Fri 8am-4:30pm
Areas Served: Marion County

www.silverfallschools.org

Willamina School District

1100 NE Oaken Hill Dr. Willamina, OR
503-876-4525

Hours: Mon-Fri 8am-5pm
Areas Served: Polk and Yamhill Counties

www.willamina.k12.or.us

Yamhill-Carlton School District*

120 N Larch Place Yamhill, OR 97148
503-852-6980

Hours: Mon-Fri 7:30am-4pm
Areas Served: Yamhill County

www.ycsd.k12.or.us



FAMILY ENGAGEMENT

EARLY LEARNING
FAMILY ACTIVITIES
FAMILY SUPPORT
PARENT EDUCATION

